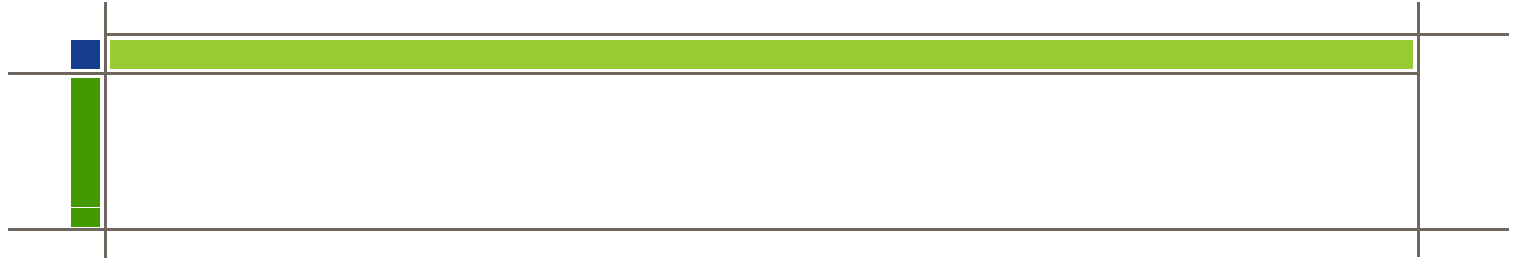




WESTWOOD®



Westwood Holdings Group, Inc.

Second Quarter 2009 Conference Call

July 23, 2009

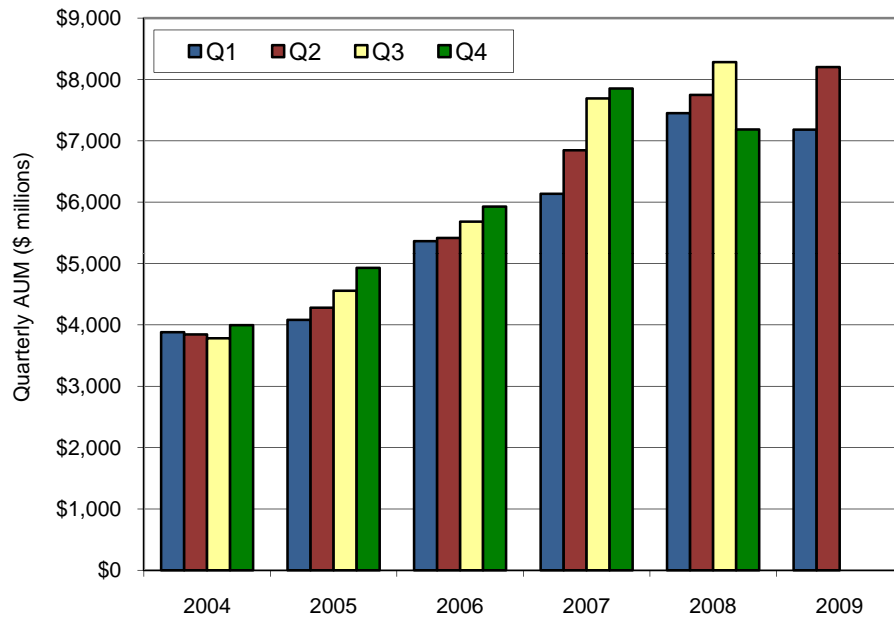
WHG
LISTED
NYSE



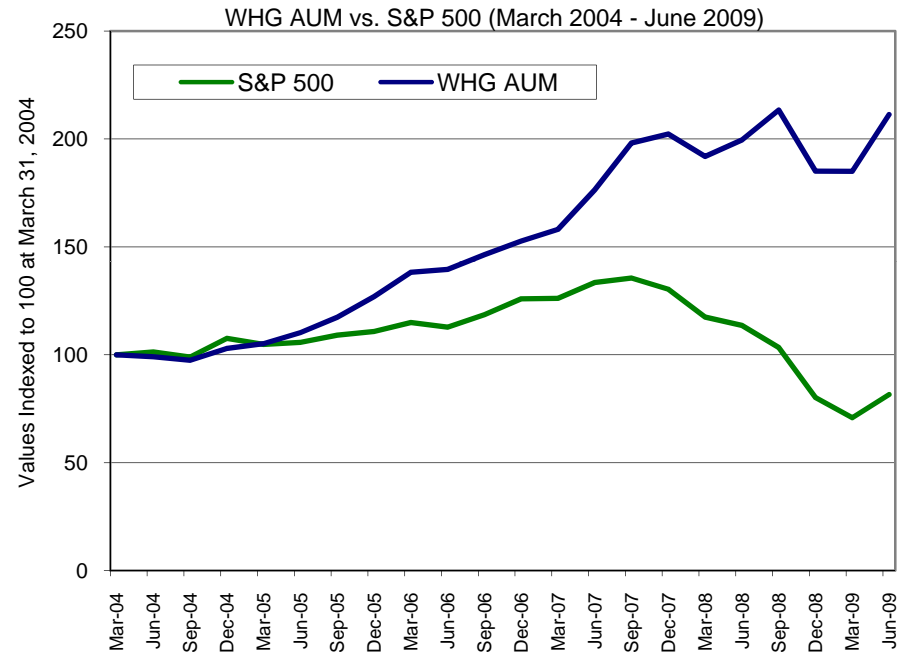
WESTWOOD®

Growth in Assets Under Management

Quarterly AUM Growth



AUM Growth in a Challenging Environment

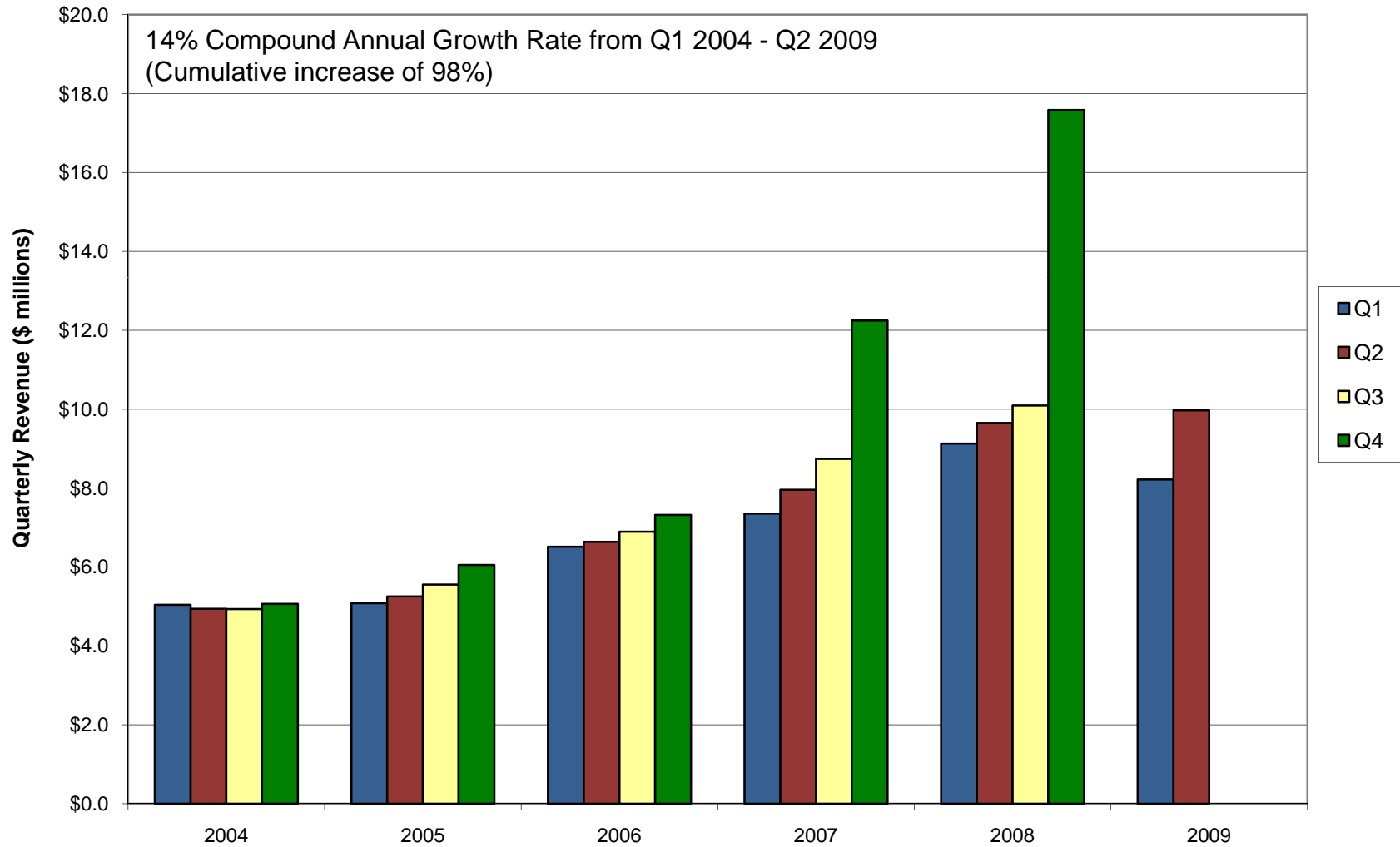


- From Q1 2004 – Q2 2009, Westwood’s AUM has increased by 111%, or a compound annual growth rate of over 15%
- Over this same period, the level of the S&P 500 index declined by 18%
- Due primarily to strong asset inflows assets under management have rebounded to just below our all-time reported high of \$8.3 billion at September 30, 2008



WESTWOOD®

Quarterly Revenue Growth (Q1 2004 – Q2 2009)



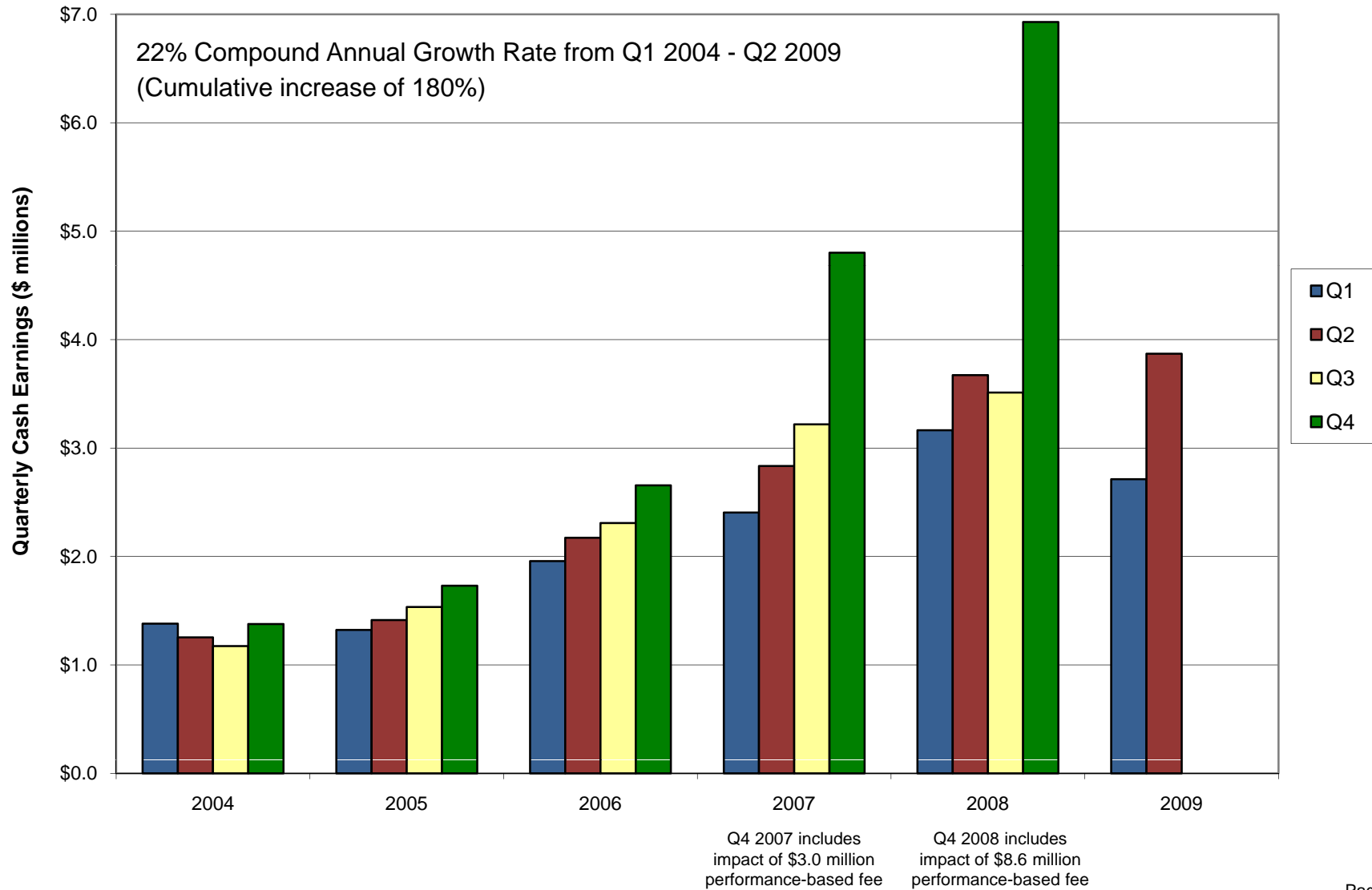
Q4 2007 includes
impact of \$3.0 million
performance-based fee

Q4 2008 includes
impact of \$8.6 million
performance-based fee



WESTWOOD®

Quarterly Cash Earnings Growth (Q1 2004 – Q2 2009)

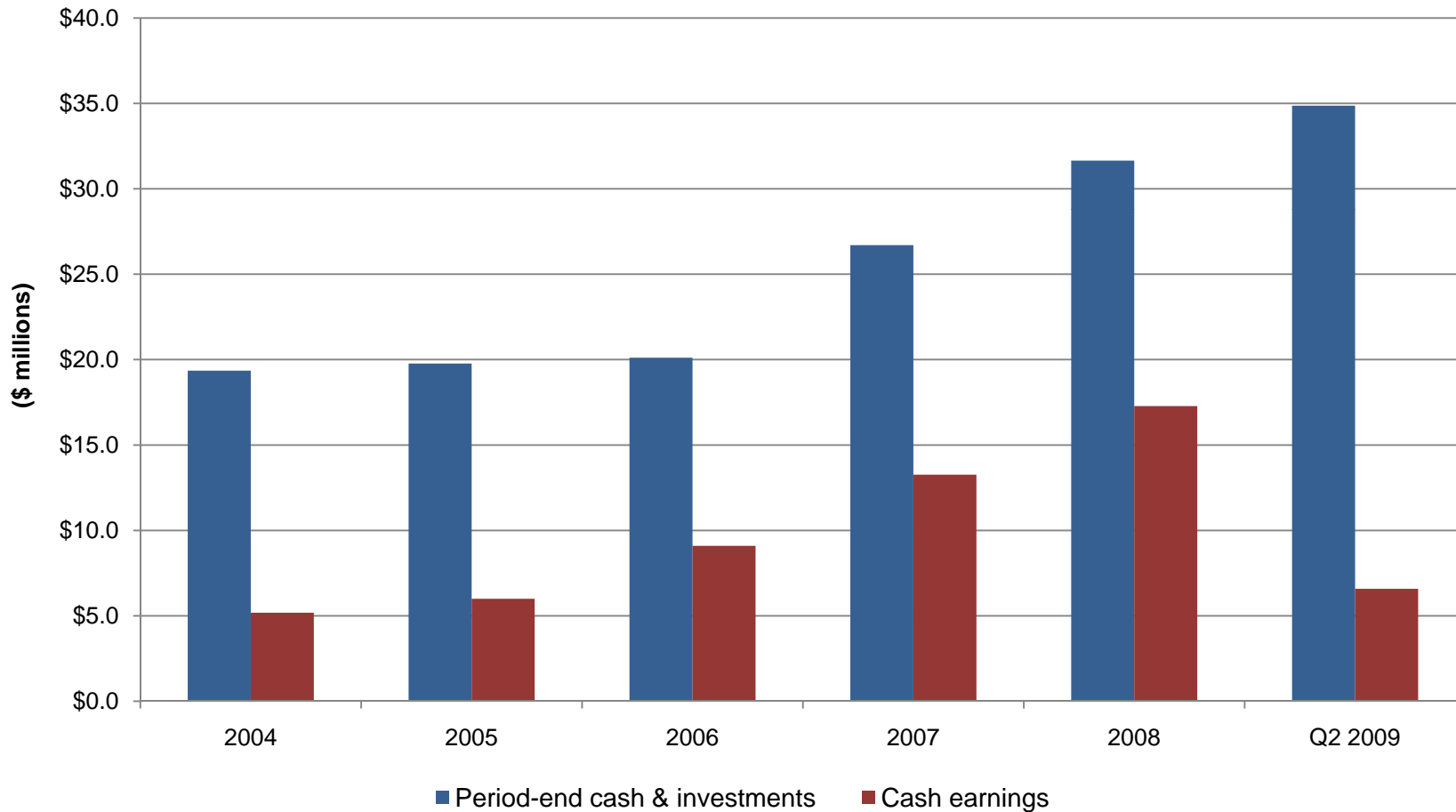




WESTWOOD®

Cash Earnings & Growing Cash Balances (2004 – Q2 2009)

Cash & Investments as of June 30, 2009 are 80% higher than at year-end 2004

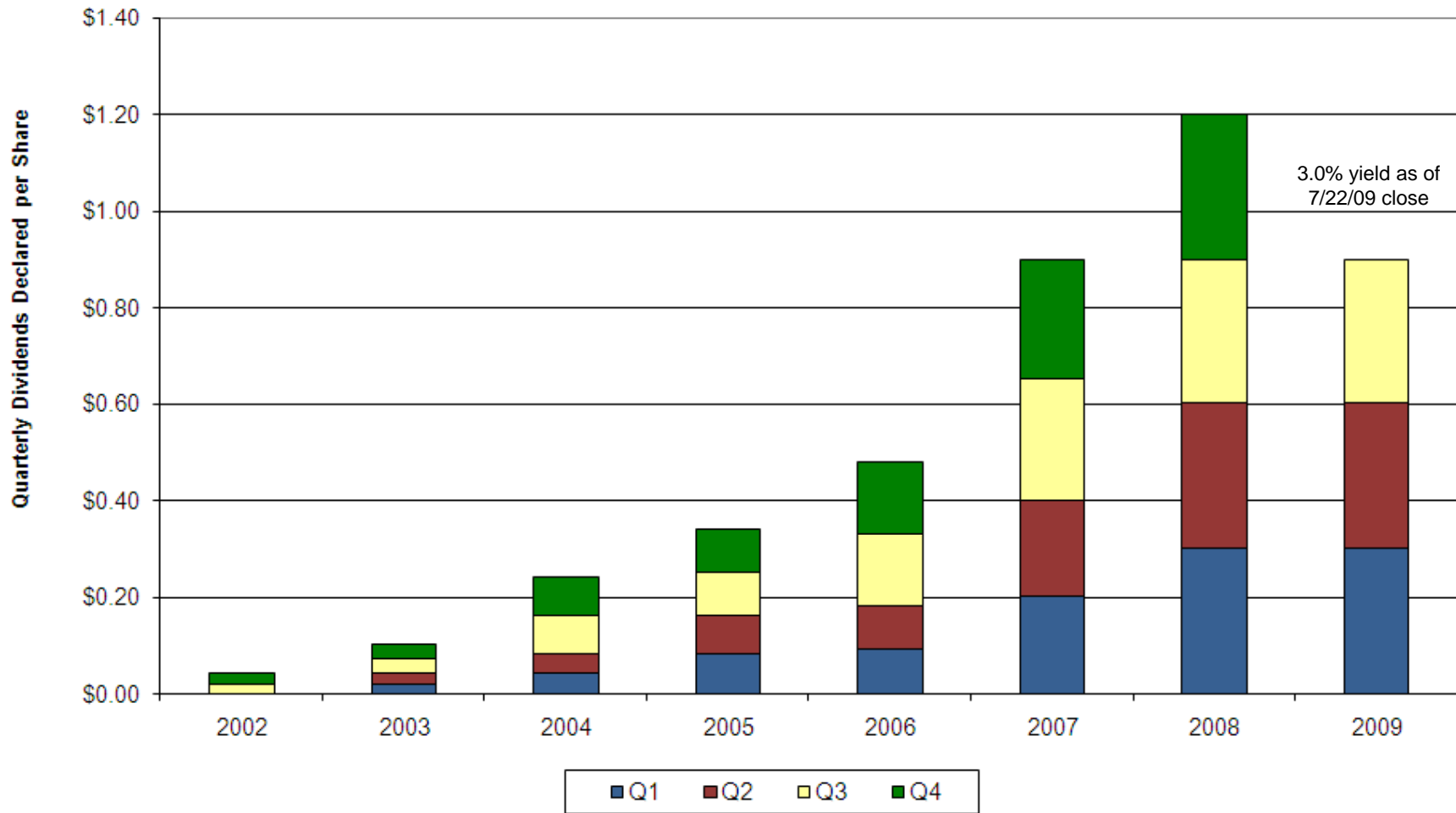




WESTWOOD®

WHG Quarterly Dividend History

WHG Quarterly Dividend History
(Excluding Special Dividends)





WESTWOOD®

Cash Earnings Reconciliation

Cash Earnings Reconciliation

(\$ thousands)

	<u>Q1 2004</u>	<u>Q2 2004</u>	<u>Q3 2004</u>	<u>Q4 2004</u>	<u>Q1 2005</u>	<u>Q2 2005</u>	<u>Q3 2005</u>	<u>Q4 2005</u>	<u>Q1 2006</u>	<u>Q2 2006</u>	<u>Q3 2006</u>	<u>Q4 2006</u>
GAAP net income	\$ 1,117	\$ 988	\$ 685	\$ 896	\$ 875	\$ 937	\$ 814	\$ 1,010	\$ 1,296	\$ 986	\$ 921	\$ 1,305
Add: Restricted stock expense	202	203	426	419	385	415	657	657	639	1,126	1,387	1,348
Add: Stock option expense	62	62	63	62	63	62	63	62	61	61	-	4
Less: Cumulative effect of change in accounting principle	-	-	-	-	-	-	-	-	(39)	-	-	-
Non-GAAP cash earnings	\$ 1,381	\$ 1,253	\$ 1,174	\$ 1,377	\$ 1,323	\$ 1,414	\$ 1,534	\$ 1,729	\$ 1,957	\$ 2,173	\$ 2,308	\$ 2,657

	<u>Q1 2007</u>	<u>Q2 2007</u>	<u>Q3 2007</u>	<u>Q4 2007</u>	<u>Q1 2008</u>	<u>Q2 2008</u>	<u>Q3 2008</u>	<u>Q4 2008</u>	<u>Q1 2009</u>	<u>Q2 2009</u>
GAAP net income	\$ 1,507	\$ 1,473	\$ 1,682	\$ 3,282	\$ 1,955	\$ 1,731	\$ 1,736	\$ 5,121	\$ 1,230	\$ 1,630
Add: Restricted stock expense	898	1,362	1,537	1,519	1,209	1,942	1,775	1,808	1,483	2,239
Add: Stock option expense	-	-	-	-	-	-	-	-	-	-
Less: Cumulative effect of change in accounting principle	-	-	-	-	-	-	-	-	-	-
Non-GAAP cash earnings	\$ 2,405	\$ 2,835	\$ 3,219	\$ 4,801	\$ 3,164	\$ 3,673	\$ 3,511	\$ 6,929	\$ 2,713	\$ 3,869