

## HIGHLIGHTS OF PRESCRIBING INFORMATION

These highlights do not include all the information needed to use VIBATIV safely and effectively. See full prescribing information for VIBATIV.

VIBATIV (telavancin) for injection, for intravenous use  
Initial U.S. Approval: 2009

To reduce the development of drug-resistant bacteria and maintain the effectiveness of VIBATIV and other antibacterial drugs, VIBATIV should be used only to treat or prevent infections that are proven or strongly suspected to be caused by bacteria.

### WARNING: FETAL RISK

See full prescribing information for complete boxed warning.

- Women of childbearing potential should have a serum pregnancy test prior to administration of VIBATIV. (8.1)
- Avoid use of VIBATIV during pregnancy unless potential benefit to the patient outweighs potential risk to the fetus. (8.1)
- Adverse developmental outcomes observed in 3 animal species at clinically relevant doses raise concerns about potential adverse developmental outcomes in humans. (8.1)

### INDICATIONS AND USAGE

VIBATIV is a lipoglycopeptide antibacterial indicated for the treatment of adult patients with complicated skin and skin structure infections (cSSSI) caused by susceptible Gram-positive bacteria. (1.1)

### DOSAGE AND ADMINISTRATION

- 10 mg/kg administered over 60 minutes by intravenous infusion once every 24 hours for 7 to 14 days. (2.1)
- Dosage adjustment in patients with renal impairment. (2.2):

Creatinine Clearance <sup>#</sup> (mL/min)	VIBATIV Dosage Regimen
>50	10 mg/kg every 24 hours
30-50	7.5 mg/kg every 24 hours
10- <30	10 mg/kg every 48 hours

<sup>#</sup> As calculated using the Cockcroft-Gault formula (12.3)

### DOSAGE FORMS AND STRENGTHS

Single-use vials containing either 250 or 750 mg telavancin. (3)

### CONTRAINDICATIONS

None. (4)

### WARNINGS AND PRECAUTIONS

- Nephrotoxicity: New onset or worsening renal impairment has occurred. Monitor renal function in all patients. (5.3)
- Decreased efficacy with moderate/severe baseline renal impairment: Consider these data when selecting antibacterial therapy for patients with baseline CrCl  $\leq$ 50 mL/min. (5.4)
- Infusion-related reactions: Administer VIBATIV over at least 60 minutes to minimize infusion-related reactions. (5.5)
- *Clostridium difficile*-associated disease: May range from mild diarrhea to fatal colitis. Evaluate if diarrhea occurs. (5.6)
- QTc prolongation: Avoid use in patients at risk. Use with caution in patients taking drugs known to prolong the QT interval. (5.8)
- Coagulation test interference: Telavancin interferes with some laboratory coagulation tests, including prothrombin time, international normalized ratio, and activated partial thromboplastin time. (5.9, 7.1)

### ADVERSE REACTIONS

Most common adverse reactions ( $\geq$ 10% of patients treated with VIBATIV) include: taste disturbance, nausea, vomiting, and foamy urine. (6.1)

To report SUSPECTED ADVERSE REACTIONS, contact Astellas Pharma US, Inc. at 1-800-727-7003 or FDA at 1-800-FDA-1088 or [www.fda.gov/medwatch](http://www.fda.gov/medwatch).

### USE IN SPECIFIC POPULATIONS

- Pregnancy: Based on animal data, may cause fetal harm. Pregnancy registry available. (8.1)
- Pediatric patients: Safety and efficacy not demonstrated. (8.4)

See 17 for PATIENT COUNSELING INFORMATION AND MEDICATION GUIDE

Revised: 09/2009

## FULL PRESCRIBING INFORMATION: CONTENTS

### WARNING: FETAL RISK

#### 1 INDICATIONS AND USAGE

- 1.1 Complicated Skin and Skin Structure Infections

#### 2 DOSAGE AND ADMINISTRATION

- 2.1 Complicated Skin and Skin Structure Infections  
2.2 Patients with Renal Impairment  
2.3 Preparation and Administration

#### 3 DOSAGE FORMS AND STRENGTHS

#### 4 CONTRAINDICATIONS

#### 5 WARNINGS AND PRECAUTIONS

- 5.1 Women of Childbearing Potential  
5.2 Pregnancy  
5.3 Nephrotoxicity  
5.4 Decreased Efficacy with Moderate/Severe Baseline Renal Impairment  
5.5 Infusion-related Reactions  
5.6 *Clostridium difficile*-Associated Diarrhea  
5.7 Development of Drug-Resistant Bacteria  
5.8 QTc Prolongation  
5.9 Coagulation Test Interference

#### 6 ADVERSE REACTIONS

- 6.1 Clinical Trials Experience

#### 7 DRUG INTERACTIONS

- 7.1 Drug-Laboratory Test Interactions

#### 8 USE IN SPECIFIC POPULATIONS

- 8.1 Pregnancy  
8.3 Nursing Mothers  
8.4 Pediatric Use  
8.5 Geriatric Use  
8.6 Patients with Renal Impairment  
8.7 Patients with Hepatic Impairment

#### 10 OVERDOSAGE

#### 11 DESCRIPTION

#### 12 CLINICAL PHARMACOLOGY

- 12.1 Mechanism of Action  
12.2 Pharmacodynamics  
12.3 Pharmacokinetics  
12.4 Microbiology

#### 13 NONCLINICAL TOXICOLOGY

- 13.1 Carcinogenesis, Mutagenesis, Impairment of Fertility  
13.2 Animal Toxicology and/or Pharmacology

#### 14 CLINICAL TRIALS

- 14.1 Complicated Skin and Skin Structure Infections

#### 15 REFERENCES

#### 16 HOW SUPPLIED/STORAGE AND HANDLING

#### 17 PATIENT COUNSELING INFORMATION

## FULL PRESCRIBING INFORMATION

### WARNING: FETAL RISK

- Women of childbearing potential should have a serum pregnancy test prior to administration of VIBATIV
- Avoid use of VIBATIV during pregnancy unless the potential benefit to the patient outweighs the potential risk to the fetus
- Adverse developmental outcomes observed in 3 animal species at clinically relevant doses raise concerns about potential adverse developmental outcomes in humans [see *Warnings and Precautions (5.1)*, *Use in Specific Populations (8.1)*]

## 1 INDICATIONS AND USAGE

To reduce the development of drug-resistant bacteria and maintain the effectiveness of VIBATIV and other antibacterial drugs, VIBATIV should be used only to treat infections that are proven or strongly suspected to be caused by susceptible bacteria. When culture and susceptibility information are available, they should be considered in selecting or modifying antibacterial therapy. In the absence of such data, local epidemiology and susceptibility patterns may contribute to the empiric selection of therapy.

### 1.1 Complicated Skin and Skin Structure Infections

VIBATIV is indicated for the treatment of adult patients with complicated skin and skin structure infections (cSSSI) caused by susceptible isolates of the following Gram-positive microorganisms: *Staphylococcus aureus* (including methicillin-susceptible and -resistant isolates), *Streptococcus pyogenes*, *Streptococcus agalactiae*, *Streptococcus anginosus* group (includes *S. anginosus*, *S. intermedius*, and *S. constellatus*), or *Enterococcus faecalis* (vancomycin-susceptible isolates only).

Combination therapy may be clinically indicated if the documented or presumed pathogens include Gram-negative organisms.

Appropriate specimens for bacteriological examination should be obtained in order to isolate and identify the causative pathogens and to determine their susceptibility to telavancin. VIBATIV may be initiated as empiric therapy before results of these tests are known.

## 2 DOSAGE AND ADMINISTRATION

### 2.1 Complicated Skin and Skin Structure Infections

The recommended dosing for VIBATIV is 10 mg/kg administered over a 60-minute period in patients  $\geq 18$  years of age by intravenous infusion once every 24 hours for 7 to 14 days. The duration of therapy should be guided by the severity and site of the infection and the patient's clinical and bacteriological progress.

### 2.2 Patients with Renal Impairment

Because telavancin is eliminated primarily by the kidney, a dosage adjustment is required for patients whose creatinine clearance is  $\leq 50$  mL/min, as listed in Table 1 [see *Clinical Pharmacology* (12.3)].

Table 1: Dosage Adjustment in Adult Patients with Renal Impairment

Creatinine Clearance* (mL/min)	VIBATIV Dosage Regimen
>50	10 mg/kg every 24 hours
30 - 50	7.5 mg/kg every 24 hours
10 - <30	10 mg/kg every 48 hours

\* As calculated using the Cockcroft-Gault formula [see *Clinical Pharmacology* (12.3)]

There is insufficient information to make specific dosage adjustment recommendations for patients with end-stage renal disease (CrCl  $< 10$  mL/min), including patients undergoing hemodialysis.

### 2.3 Preparation and Administration

**250 mg vial:** Reconstitute the contents of a VIBATIV 250 mg vial with **15** mL of 5% Dextrose Injection, USP; Sterile Water for Injection, USP; or 0.9% Sodium Chloride Injection, USP. The resultant solution has a concentration of 15 mg/mL (total volume of approximately 17.0 mL).

**750 mg vial:** Reconstitute the contents of a VIBATIV 750 mg vial with **45** mL of 5% Dextrose Injection, USP; Sterile Water for Injection, USP; or 0.9% Sodium Chloride Injection, USP. The resultant solution has a concentration of 15 mg/mL (total volume of approximately 50.0 mL).

The following formula can be used to calculate the volume of reconstituted VIBATIV solution required to prepare a dose:

**Telavancin dose (mg) = 10 mg/kg or 7.5 mg/kg x patient weight (in kg)** (see Table 1)

**Volume of reconstituted solution (mL) =  $\frac{\text{Telavancin dose (mg)}}{15 \text{ mg/mL}}$**

For doses of 150 to 800 mg, the appropriate volume of reconstituted solution must be further diluted in 100 to 250 mL prior to infusion. Doses less than 150 mg or greater than 800 mg should be further diluted in a volume resulting in a final concentration of 0.6 to 8 mg/mL. Appropriate infusion solutions include: 5% Dextrose Injection, USP; 0.9% Sodium Chloride Injection, USP; or Lactated Ringer's Injection, USP. The dosing solution should be administered by intravenous infusion over a period of 60 minutes.

Reconstitution time is generally under 2 minutes, but can sometimes take up to 20 minutes. Mix thoroughly to reconstitute and check to see if the contents have dissolved completely. Parenteral drug products should be inspected visually for particulate matter prior to administration. Discard the vial if the vacuum did not pull the diluent into the vial.

Since no preservative or bacteriostatic agent is present in this product, aseptic technique must be used in preparing the final intravenous solution. Studies have shown that the reconstituted solution in the vial should be used within 4 hours when stored at room temperature or within 72 hours under refrigeration at 2 to 8°C (36 to 46°F). The diluted (dosing) solution in the infusion bag should be used within 4 hours when stored at room temperature or used within 72 hours when stored under refrigeration at 2 to 8°C (36 to 46°F). However, the total time in the vial plus the time in the infusion bag should not exceed 4 hours at room temperature and 72 hours under refrigeration at 2 to 8°C (36 to 46°F).

VIBATIV is administered intravenously. Because only limited data are available on the compatibility of VIBATIV with other IV substances, additives or other medications should not be added to VIBATIV single-use vials or infused simultaneously through the same IV line. If the same intravenous line is used for sequential infusion of additional medications, the line should be flushed before and after infusion of VIBATIV with 5% Dextrose Injection, USP; 0.9% Sodium Chloride Injection, USP; or Lactated Ringer's Injection, USP.

### **3 DOSAGE FORMS AND STRENGTHS**

VIBATIV is supplied in single-use vials containing either 250 or 750 mg telavancin as a sterile, lyophilized powder.

## **4 CONTRAINDICATIONS**

None.

## **5 WARNINGS AND PRECAUTIONS**

### **5.1 Women of Childbearing Potential**

Women of childbearing potential should have a serum pregnancy test prior to administration of VIBATIV. If not already pregnant, women of childbearing potential should use effective contraception during VIBATIV treatment.

### **5.2 Pregnancy**

Avoid use of VIBATIV during pregnancy unless the potential benefit to the patient outweighs the potential risk to the fetus. VIBATIV caused adverse developmental outcomes in 3 animal species at clinically relevant doses. This raises concern about potential adverse developmental outcomes in humans [*see Use in Specific Populations (8.1)*].

### **5.3 Nephrotoxicity**

Increases in serum creatinine to 1.5 times baseline occurred more frequently among VIBATIV-treated patients with normal baseline serum creatinine (15%) compared with vancomycin-treated patients with normal baseline serum creatinine (7%).

In 30/929 (3.1%) of VIBATIV-treated patients compared to 10/938 (1.1%) of vancomycin-treated patients, renal adverse events indicative of renal impairment occurred, as defined by the following terms: increased serum creatinine, renal impairment, renal insufficiency, and/or renal failure. In 17 of the 30 VIBATIV-treated patients, these adverse events had not completely resolved by the end of the trials, compared with 6 of the 10 vancomycin-treated patients. Serious adverse events indicative of renal impairment occurred in 11/929 (1.2%) of VIBATIV-treated patients compared to 3/938 (0.3%) of vancomycin-treated patients. Twelve patients treated with VIBATIV discontinued treatment due to adverse events indicative of renal impairment compared to 2 patients treated with vancomycin. Adverse events were more likely to occur in patients with baseline comorbidities known to predispose patients to kidney dysfunction (pre-existing renal disease, diabetes mellitus, congestive heart failure, or hypertension). The renal adverse event rate was also higher in patients who received concomitant medications known to affect kidney function (eg, non-steroidal anti-inflammatory drugs, ACE inhibitors, and loop diuretics). Fifteen of 174 patients (8.6%)

≥65 years of age had adverse events indicative of renal impairment compared to 16 of 755 patients (1.9%) <65 years of age [see *Use in Specific Populations (8.5)*].

Monitor renal function (i.e., serum creatinine, creatinine clearance) in all patients receiving VIBATIV. Values should be obtained prior to initiation of treatment, during treatment (at 48- to 72-hour intervals or more frequently, if clinically indicated), and at the end of therapy. If renal function decreases, the benefit of continuing VIBATIV versus discontinuing and initiating therapy with an alternative agent should be assessed [see *Dosage and Administration, Clinical Pharmacology (2.2)*].

In patients with renal dysfunction, accumulation of the solubilizer hydroxypropyl-beta-cyclodextrin can occur [see *Patients with Renal Impairment (8.6) and Clinical Pharmacology (12.3)*].

#### 5.4 Decreased Efficacy with Moderate/Severe Baseline Renal Impairment

In a subgroup analysis of the pooled cSSSI studies, clinical cure rates in the telavancin-treated patients were lower in patients with baseline CrCl ≤50 mL/min compared to those with CrCl >50 mL/min (Table 2). A decrease of this magnitude was not observed in vancomycin-treated patients. Consider these data when selecting antibacterial therapy for use in patients with baseline moderate/severe renal impairment.

Table 2: Clinical Cure by Baseline Renal Function

	VIBATIV % (n/N)	Vancomycin % (n/N)
<b>ATe Population<sup>1</sup></b>		
CrCl >50 mL/min	75.3% (565/750)	73.7% (575/780)
CrCl ≤50 mL/min	63.1% (70/111)	69.4% (75/108)
<b>CE Population<sup>2</sup></b>		
CrCl >50 mL/min	87.0% (520/598)	85.9% (524/610)
CrCl ≤50 mL/min	67.4% (58/86)	82.7% (67/81)

<sup>1</sup> All-treated population - includes all patients randomized, treated, and evaluated for efficacy

<sup>2</sup> Clinically evaluable population

#### 5.5 Infusion-Related Reactions

VIBATIV is a lipoglycopeptide antibacterial agent and should be administered over a period of 60 minutes to reduce the risk of infusion-related reactions. Rapid intravenous infusions of the glycopeptide class of antimicrobial agents can cause “Red-man Syndrome”-like

reactions including: flushing of the upper body, urticaria, pruritus, or rash. Stopping or slowing the infusion may result in cessation of these reactions.

## **5.6 Clostridium difficile-Associated Diarrhea**

*Clostridium difficile*-associated diarrhea (CDAD) has been reported with nearly all antibacterial agents and may range in severity from mild diarrhea to fatal colitis. Treatment with antibacterial agents alters the flora of the colon and may permit overgrowth of *C. difficile*.

*C. difficile* produces toxins A and B which contribute to the development of CDAD. Hyper-toxin-producing strains of *C. difficile* cause increased morbidity and mortality, since these infections can be refractory to antimicrobial therapy and may require colectomy. CDAD must be considered in all patients who present with diarrhea following antibiotic use. Careful medical history is necessary because CDAD has been reported to occur over 2 months after the administration of antibacterial agents.

If CDAD is suspected or confirmed, ongoing antibiotic use not directed against *C. difficile* may need to be discontinued. Appropriate fluid and electrolyte management, protein supplementation, antibiotic treatment of *C. difficile*, and surgical evaluation should be instituted as clinically indicated.

## **5.7 Development of Drug-Resistant Bacteria**

Prescribing VIBATIV in the absence of a proven or strongly suspected bacterial infection is unlikely to provide benefit to the patient and increases the risk of the development of drug-resistant bacteria.

As with other antibacterial drugs, use of VIBATIV may result in overgrowth of nonsusceptible organisms, including fungi. Patients should be carefully monitored during therapy. If superinfection occurs, appropriate measures should be taken.

## **5.8 QTc Prolongation**

In a study involving healthy volunteers, doses of 7.5 and 15 mg/kg of VIBATIV prolonged the QTc interval [see *Clinical Pharmacology (12.2)*]. Caution is warranted when prescribing VIBATIV to patients taking drugs known to prolong the QT interval. Patients with congenital long QT syndrome, known prolongation of the QTc interval, uncompensated heart failure, or severe left ventricular hypertrophy were not included in clinical trials of VIBATIV. Use of VIBATIV should be avoided in patients with these conditions.

## 5.9 Coagulation Test Interference

Although telavancin does not interfere with coagulation, it interfered with certain tests used to monitor coagulation (Table 3), when conducted using samples drawn 0 to 18 hours after VIBATIV administration for patients being treated once every 24 hours. Blood samples for these coagulation tests should be collected as close as possible prior to a patient's next dose of VIBATIV. Blood samples for coagulation tests unaffected by VIBATIV may be collected at any time [see *Drug Interactions (7.1)*].

Table 3: Coagulation Tests Affected and Unaffected by Telavancin

Affected by Telavancin	Unaffected by Telavancin
Prothrombin time	Thrombin time
International normalized ratio	Whole blood (Lee-White) clotting time
Activated partial thromboplastin time	Ex vivo platelet aggregation
Activated clotting time	Chromogenic factor Xa assay
Coagulation based factor Xa tests	Functional (chromogenic) factor X assay
	Bleeding time
	D-dimer
	Fibrin degradation products

No evidence of increased bleeding risk has been observed in clinical trials with VIBATIV. Telavancin has no effect on platelet aggregation. Furthermore, no evidence of hypercoagulability has been seen, as healthy subjects receiving VIBATIV have normal levels of D-dimer and fibrin degradation products.

## 6 ADVERSE REACTIONS

The following serious adverse reactions are discussed elsewhere in the labeling:

- Nephrotoxicity [see *Warnings and Precautions (5.3)*]
- Infusion-related reactions [see *Warnings and Precautions (5.5)*]
- *Clostridium difficile*-associated diarrhea [see *Warnings and Precautions (5.6)*]

Because clinical trials are conducted under widely varying conditions, adverse reaction rates observed in the clinical trials of a drug cannot be directly compared to rates in the clinical trials of another drug and may not reflect the rates observed in practice.



## 6.1 Clinical Trials Experience

The two Phase 3 cSSSI clinical trials (Trial 1 and Trial 2) for VIBATIV included 929 adult patients treated with VIBATIV at 10 mg/kg IV once daily. The mean age of patients treated with VIBATIV was 49 years (range 18-96). There was a slight male predominance (56%) in patients treated with VIBATIV, and patients were predominantly Caucasian (78%).

In the cSSSI clinical trials, <1% (8/929) patients who received VIBATIV died and <1% (8/938) patients treated with vancomycin died. Serious adverse events were reported in 7% (69/929) of patients treated with VIBATIV and most commonly included renal, respiratory, or cardiac events. Serious adverse events were reported in 5% (43/938) of vancomycin-treated patients, and most commonly included cardiac, respiratory, or infectious events. Treatment discontinuations due to adverse events occurred in 8% (72/929) of patients treated with VIBATIV, the most common events being nausea and rash (~1% each). Treatment discontinuations due to adverse events occurred in 6% (53/938) of vancomycin-treated patients, the most common events being rash and pruritus (~1% each).

The most common adverse reactions occurring in  $\geq 10\%$  of VIBATIV-treated patients observed in the VIBATIV Phase 3 cSSSI trials were taste disturbance, nausea, vomiting, and foamy urine.

Table 4 displays the incidence of treatment-emergent adverse drug reactions reported in  $>2\%$  of patients treated with VIBATIV possibly related to the drug (including those reactions known to occur with other glycopeptide antibacterial agents).

Table 4: Incidence of Treatment-emergent Adverse Drug Reactions Reported in  $\geq 2\%$  of VIBATIV or Vancomycin Patients Treated in Trial 1 and Trial 2

	<b>VIBATIV (N=929)</b>	<b>Vancomycin (N=938)</b>
Body as a Whole		
Rigors	4%	2%
Generalized pruritus	3%	6%
Digestive System		
Nausea	27%	15%
Vomiting	14%	7%
Diarrhea	7%	8%
Abdominal pain	2%	2%

	<b>VIBATIV (N=929)</b>	<b>Vancomycin (N=938)</b>
<b>Metabolic and Nutritional</b>		
Decreased appetite	3%	2%
<b>Nervous System</b>		
Taste disturbance <sup>1</sup>	33%	7%
Dizziness	6%	6%
<b>Renal System</b>		
Foamy urine	13%	3%
<b>Skin and Appendages</b>		
Pruritus	6%	13%
Rash	4%	5%
<b>Other</b>		
Infusion site pain	4%	4%
Infusion site erythema	3%	3%

<sup>1</sup> Described as a metallic or soapy taste.

## **7 DRUG INTERACTIONS**

### **7.1 Drug-Laboratory Test Interactions**

#### Effects of Telavancin on Coagulation Test Parameters

Telavancin binds to the artificial phospholipid surfaces added to common anticoagulation tests, thereby interfering with the ability of the coagulation complexes to assemble on the surface of the phospholipids and promote clotting in vitro. These effects appear to depend on the type of reagents used in commercially available assays. Thus, when measured shortly after completion of an infusion of VIBATIV, increases in the PT, INR, aPTT, and ACT have been observed. These effects dissipate over time, as plasma concentrations of telavancin decrease.

#### Urine Protein Tests

Telavancin interferes with urine qualitative dipstick protein assays, as well as quantitative dye methods (e.g., pyrogallol red-molybdate). However, microalbumin assays are not affected and can be used to monitor urinary protein excretion during VIBATIV treatment.

## 8 USE IN SPECIFIC POPULATIONS

### 8.1 Pregnancy

#### Teratogenic effects: Pregnancy Category C

##### *Pregnancy Exposure Registry*

There is a pregnancy registry that monitors pregnancy outcomes in women exposed to VIBATIV during pregnancy. Physicians are encouraged to register pregnant patients, or pregnant women may enroll themselves in the VIBATIV pregnancy registry by calling 1-888-658-4228.

##### *Fetal Risk Summary*

All pregnancies have a background risk of birth defects (about 3%), pregnancy loss (about 15%), or other adverse outcomes regardless of drug exposure.

There are no data on VIBATIV use in pregnant women. In 3 animal species, VIBATIV exposure during pregnancy at clinically relevant doses caused reduced fetal weights and increased rates of digit and limb malformations in offspring. These data raise concern about potential adverse developmental outcomes in humans (see *Data*).

##### *Clinical Considerations*

Given the lack of human data and the risks suggested by animal data, avoid using VIBATIV in pregnant women unless the benefits to the patient outweigh the potential risks to the fetus.

##### *Data*

###### Human Data

There are no data on human pregnancies exposed to VIBATIV.

###### Animal Data

In embryo-fetal development studies in rats, rabbits, and minipigs, telavancin demonstrated the potential to cause limb and skeletal malformations when given intravenously during the period of organogenesis at doses up to 150, 45 or 75 mg/kg/day, respectively. These doses resulted in exposure levels approximately 1- to 2-fold the human exposure (AUC) at the maximum clinical recommended dose. Malformations observed at <1% (but absent or at lower rates in historical or concurrent controls), included brachymelia (rats and rabbits), syndactyly (rats, minipigs), adactyly (rabbits), and polydactyly (minipigs). Additional findings

in rabbits included flexed front paw and absent ulna, and in the minipigs included misshapen digits and deformed front leg. Fetal body weights were decreased in rats.

In a prenatal/perinatal development study, pregnant rats received intravenous telavancin at up to 150 mg/kg/day (approximately the same AUC as observed at the maximum clinical dose) from the start of organogenesis through lactation. Offspring showed decreases in fetal body weight and an increase in the number of stillborn pups. Brachymelia was also observed. Developmental milestones and fertility of the pups were unaffected.

### **8.3 Nursing Mothers**

It is not known whether telavancin is excreted in human milk. Because many drugs are excreted in human milk, caution should be exercised when VIBATIV is administered to a nursing woman.

### **8.4 Pediatric Use**

The safety and effectiveness of VIBATIV in pediatric patients has not been studied.

### **8.5 Geriatric Use**

Of the 929 patients treated with VIBATIV at a dose of 10 mg/kg once daily in clinical trials of cSSSI, 174 (18.7%) were  $\geq 65$  years of age and 87 (9.4%) were  $\geq 75$  years of age. In the cSSSI trials, lower clinical cure rates were observed in patients  $\geq 65$  years of age compared with those  $< 65$  years of age. Overall, treatment-emergent adverse events occurred with similar frequencies in patients  $\geq 65$  (75% of patients) and  $< 65$  years of age (83% of patients). Fifteen of 174 (8.6%) patients  $\geq 65$  years of age treated with telavancin had adverse events indicative of renal impairment compared to 16 of 755 (1.9%) patients  $< 65$  years of age [see *Warnings and Precautions (5.3), Clinical Trials (14.1)*].

Telavancin is substantially excreted by the kidney, and the risk of adverse reactions may be greater in patients with impaired renal function. Because elderly patients are more likely to have decreased renal function, care should be taken in dose selection in this age group.

The mean plasma AUC values of telavancin were similar in healthy young and elderly subjects. Dosage adjustment for elderly patients should be based on renal function [see *Dosage and Administration, Clinical Pharmacology (12.3)*].

## 8.6 Patients with Renal Impairment

The cSSSI trials included patients with normal renal function and patients with varying degrees of renal impairment. Patients with underlying renal dysfunction or risk factors for renal dysfunction had a higher incidence of renal adverse events [see *Warnings and Precautions (5.3)*]. Patients with creatinine clearance  $\leq 50$  mL/min also had lower clinical cure rates. Consider these data when selecting antibacterial therapy in patients with baseline moderate/ severe renal impairment (CrCl  $\leq 50$  mL/min).

Dosage adjustment is required in patients with  $\leq 50$  mL/min renal impairment [see *Dosage and Administration (2.2)*]. There is insufficient information to make specific dosage adjustment recommendations for patients with end-stage renal disease (CrCl  $< 10$  mL/min), including patients receiving hemodialysis [see *Overdosage (10)*, *Clinical Pharmacology (12.3)*].

Hydroxypropyl-beta-cyclodextrin is excreted in urine and may accumulate in patients with renal impairment. Serum creatinine should be closely monitored and, if renal toxicity is suspected, an alternative agent should be considered [see *Warnings and Precautions (5.3)*, *Clinical Pharmacology (12.3)*].

## 8.7 Patients with Hepatic Impairment

The cSSSI trials included patients with normal hepatic function and with hepatic impairment. No dosage adjustment is recommended in patients with mild or moderate hepatic impairment [see *Clinical Pharmacology (12.3)*].

## 10 OVERDOSAGE

In the event of overdosage, VIBATIV should be discontinued and supportive care is advised with maintenance of glomerular filtration and careful monitoring of renal function. Following administration of a single dose of VIBATIV 7.5 mg/kg to subjects with end-stage renal disease, approximately 5.9% of the administered dose of telavancin was recovered in the dialysate following 4 hours of hemodialysis. However, no information is available on the use of hemodialysis to treat an overdosage [see *Clinical Pharmacology (12.3)*].

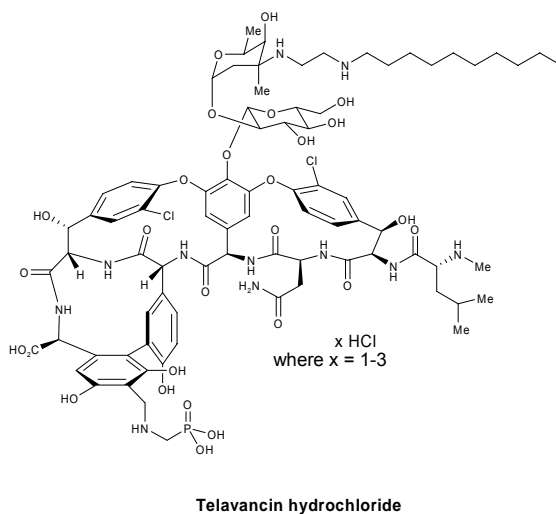
The clearance of telavancin by continuous venovenous hemofiltration (CVVH) was evaluated in an in vitro study [see *Nonclinical Toxicology (13.2)*]. Telavancin was cleared by CVVH and the clearance of telavancin increased with increasing ultrafiltration rate. However, the clearance of telavancin by CVVH has not been evaluated in a clinical study;

thus, the clinical significance of this finding and use of CVVH to treat an overdose is unknown.

## 11 DESCRIPTION

VIBATIV contains telavancin hydrochloride, a lipoglycopeptide antibacterial that is a synthetic derivative of vancomycin. The chemical name of telavancin hydrochloride is vancomycin,N3''-[2-(decylamino)ethyl]-29-[[[(phosphono-methyl)-amino]-methyl]-hydrochloride. Telavancin hydrochloride has the following chemical structure:

Figure 1: Telavancin Hydrochloride



Telavancin hydrochloride is an off-white to slightly colored amorphous powder with the empirical formula  $C_{80}H_{106}Cl_{12}N_{11}O_{27}P \cdot xHCl$  (where  $x = 1$  to  $3$ ) and a free-base molecular weight of 1755.6. It is highly lipophilic and slightly soluble in water.

VIBATIV is a sterile, preservative-free, white to slightly colored lyophilized powder containing telavancin hydrochloride (equivalent to either 250 mg or 750 mg of telavancin as the free base) for intravenous use. The inactive ingredients are Hydroxypropylbetadex, Ph. Eur (hydroxypropyl-beta-cyclodextrin) (2500 mg per 250 mg telavancin, 7500 mg per 750 mg telavancin), mannitol (312.5 mg per 250 mg telavancin, 937.5 mg per 750 mg telavancin), and sodium hydroxide and hydrochloric acid used in minimal quantities for pH adjustment. When reconstituted, it forms a clear to slightly colored solution with a pH of 4.5 (4.0 to 5.0).

## 12 CLINICAL PHARMACOLOGY

### 12.1 Mechanism of Action

Telavancin is an antibacterial drug [see *Clinical Pharmacology (12.4)*].

### 12.2 Pharmacodynamics

The antimicrobial activity of telavancin appears to best correlate with the ratio of area under the concentration-time curve to minimal inhibitory concentration (AUC/MIC) for *Staphylococcus aureus* based on animal models of infection. An exposure-response analysis of 2 cSSSI clinical trials supports the dose of 10 mg/kg every 24 hours.

#### Cardiac Electrophysiology

The effect of telavancin on cardiac repolarization was assessed in a randomized, double-blind, multiple-dose, positive-controlled, and placebo-controlled, parallel study (n=160). Healthy subjects received VIBATIV 7.5 mg/kg, VIBATIV 15 mg/kg, positive control, or placebo infused over 60 minutes once daily for 3 days. Based on interpolation of the data from VIBATIV 7.5 mg/kg and 15 mg/kg, the mean maximum baseline-corrected, placebo-corrected QTc prolongation at the end of infusion was estimated to be 12-15 msec for VIBATIV 10 mg/kg and 22 msec for the positive control (Table 5). By 1 hour after infusion the maximum QTc prolongation was 6-9 msec for VIBATIV and 15 msec for the positive control.

Table 5: Mean and Maximum QTcF Changes from Baseline Relative to Placebo

	QTcF <sup>1</sup> Change from Baseline	
	Mean (Upper 90% Confidence Limit <sup>2</sup> ) msec	Maximum (Upper 90% Confidence Limit) msec
VIBATIV 7.5 mg/kg	4.1 (7)	11.6 (16)
VIBATIV 15 mg/kg	4.6 (8)	15.1 (20)
Positive Control	9.5 (13)	21.6 (26)

<sup>1</sup> Fridericia corrected

<sup>2</sup> Upper CL from a 2-sided 90% CI on difference from placebo (msec)

ECGs were performed prior to and during the treatment period in patients receiving VIBATIV 10 mg/kg in 3 studies to monitor QTc intervals. In these trials, 214 of 1029 (21%) patients allocated to treatment with VIBATIV and 164 of 1033 (16%) allocated to vancomycin

received concomitant medications known to prolong the QTc interval and are known to be associated with definite or possible risk of torsades de pointes. The incidence of QTc prolongation >60 msec was 1.5% (15 patients) in the VIBATIV group and 0.6% (6 patients) in the vancomycin group. Nine of the 15 VIBATIV patients received concomitant medications known to prolong the QTc interval and definitely or possibly associated with a risk of torsades de pointes, compared with 1 of the 6 patients who received vancomycin. A similar number of patients in each treatment group (<1%) who did not receive a concomitant medication known to prolong the QTc interval experienced a prolongation >60 msec from baseline. In a separate analysis, 1 patient in the VIBATIV group and 2 patients in the vancomycin group experienced QTc >500 msec. No cardiac adverse events were ascribed to prolongation of the QTc interval.

### 12.3 Pharmacokinetics

The mean pharmacokinetic parameters of telavancin (10mg/kg) after a single and multiple 60-minute intravenous infusions (10 mg/kg every 24 hours) are summarized in Table 6.

Table 6: Pharmacokinetic Parameters of Telavancin in Healthy Adults, 10 mg/kg

	Single Dose	Multiple Dose
	(n=42)	(n=36)
C <sub>max</sub> (mcg/mL)	93.6 ± 14.2	108 ± 26
AUC <sub>0-∞</sub> (mcg·hr/mL)	747 ± 129	-- <sup>1</sup>
AUC <sub>0-24h</sub> (mcg·hr/mL)	666 ± 107	780 ± 125
t <sub>1/2</sub> (hr)	8.0 ± 1.5	8.1 ± 1.5
Cl (mL/hr/kg)	13.9 ± 2.9	13.1 ± 2.0
V <sub>ss</sub> (mL/kg)	145 ± 23	133 ± 24
C <sub>max</sub> maximum plasma concentration AUC area under concentration-time course t <sub>1/2</sub> terminal elimination half-life Cl clearance V <sub>ss</sub> apparent volume of distribution at steady state <sup>1</sup> Data not available		

In healthy young adults, the pharmacokinetics of telavancin administered intravenously were linear following single doses from 5 to 12.5 mg/kg and multiple doses from 7.5 to 15 mg/kg administered once-daily for up to 7 days. Steady-state concentrations were achieved by the third daily dose.



## Distribution

Telavancin binds to human plasma proteins, primarily to serum albumin, in a concentration-independent manner. The mean binding is approximately 90% and is not affected by renal or hepatic impairment.

Concentrations of telavancin in skin blister fluid were 40% of those in plasma ( $AUC_{0-24hr}$  ratio) after 3 daily doses of 7.5 mg/kg VIBATIV in healthy young adults.

## Metabolism

No metabolites of telavancin were detected in in vitro studies using human liver microsomes, liver slices, hepatocytes, and kidney S9 fraction. None of the following recombinant CYP 450 isoforms were shown to metabolize telavancin in human liver microsomes: CYP 1A2, 2C9, 2C19, 2D6, 3A4, 3A5, 4A11. The clearance of telavancin is not expected to be altered by inhibitors of any of these enzymes.

In a mass balance study in male subjects using radiolabeled telavancin, 3 hydroxylated metabolites were identified with the predominant metabolite (THR-651540) accounting for <10% of the radioactivity in urine and <2% of the radioactivity in plasma. The metabolic pathway for telavancin has not been identified.

## Excretion

Telavancin is primarily eliminated by the kidney. In a mass balance study, approximately 76% of the administered dose was recovered from urine and <1% of the dose was recovered from feces (collected up to 216 hours) based on total radioactivity.

## Specific Populations

### *Geriatric Patients*

The impact of age on the pharmacokinetics of telavancin was evaluated in healthy young (range 21-42 years) and elderly (range 65-83 years) subjects. The mean CrCl of elderly subjects was 66 mL/min. Age alone did not have a clinically meaningful impact on the pharmacokinetics of telavancin [see *Use in Specific Populations (8.5)*].

### *Pediatric Patients*

The pharmacokinetics of telavancin in patients less than 18 years of age have not been studied.

### *Gender*

The impact of gender on the pharmacokinetics of telavancin was evaluated in healthy male (n=8) and female (n=8) subjects. The pharmacokinetics of telavancin were similar in males and females. No dosage adjustment is recommended based on gender.

### *Renal Impairment*

The pharmacokinetics of telavancin were evaluated in subjects with normal and subjects with varying degrees of renal impairment following administration of a single dose of telavancin 7.5 mg/kg (n=28). The mean AUC<sub>0-∞</sub> values were approximately 13%, 29%, and 118% higher for subjects with CrCl >50 to 80 mL/min, CrCl 30 to 50 mL/min, and CrCl <30 mL/min, respectively, compared to subjects with normal renal function. Dosage adjustment is required in patients with CrCl ≤50 mL/min [see *Dosage and Administration* (2.2)].

Creatinine clearance was estimated from serum creatinine based on the Cockcroft-Gault formula:

$$\text{CrCl} = \frac{[140 - \text{age (years)}] \times \text{ideal body weight (kg)}^* \{ \times 0.85 \text{ for female patients} \}}{[72 \times \text{serum creatinine (mg/dL)}]}$$

\*Use actual body weight if < ideal body weight (IBW)

IBW (male) = 50 kg + 0.9 kg/cm over 152 cm height

IBW (female) = 45.5 kg + 0.9 kg/cm over 152 cm height

Following administration of a single dose of VIBATIV 7.5 mg/kg to subjects with end-stage renal disease, approximately 5.9% of the administered dose of telavancin was recovered in the dialysate following 4 hours of hemodialysis. The effects of peritoneal dialysis have not been studied.

Following a single intravenous dose of VIBATIV 7.5 mg/kg, the clearance of hydroxypropyl-beta-cyclodextrin was reduced in subjects with renal impairment, resulting in a higher exposure to hydroxypropyl-beta-cyclodextrin. In subjects with mild, moderate, and severe

renal impairment, the mean clearance values were 38%, 59%, and 82% lower, respectively, compared to subjects with normal renal function. Multiple infusions of VIBATIV may result in accumulation of hydroxypropyl-beta-cyclodextrin.

#### *Hepatic Impairment*

The pharmacokinetics of telavancin were not altered in subjects with moderate hepatic impairment (n= 8, Child-Pugh B) compared to healthy subjects with normal hepatic function matched for gender, age, and weight. The pharmacokinetics of telavancin have not been evaluated in patients with severe hepatic impairment (Child-Pugh C).

#### Drug Interactions

##### *In Vitro*

The inhibitory activity of telavancin against the following CYP 450 enzymes was evaluated in human liver microsomes: CYP 1A2, 2C9, 2C19, 2D6, and 3A4/5. Telavancin inhibited CYP 3A4/5 at potentially clinically relevant concentrations. Upon further evaluation in a Phase 1 clinical trial, telavancin was found not to inhibit the metabolism of midazolam, a sensitive CYP3A substrate (see below).

##### *Midazolam*

The impact of telavancin on the pharmacokinetics of midazolam (CYP 3A4/5 substrate) was evaluated in 16 healthy adult subjects following administration of a single dose of VIBATIV 10 mg/kg, intravenous midazolam 1 mg, and both. The results showed that telavancin had no impact on the pharmacokinetics of midazolam and midazolam had no effect on the pharmacokinetics of telavancin. Therefore, telavancin is unlikely to alter the pharmacokinetics of drugs metabolized by the CYP450 system to a clinically significant degree.

##### *Aztreonam*

The impact of telavancin on the pharmacokinetics of aztreonam was evaluated in 11 healthy adult subjects following administration of a single dose of VIBATIV 10 mg/kg, aztreonam 2 gm, and both. Telavancin had no impact on the pharmacokinetics of aztreonam and aztreonam had no effect on the pharmacokinetics of telavancin. No dosage adjustment of telavancin or aztreonam is recommended when both drugs are coadministered.

### *Piperacillin-tazobactam*

The impact of telavancin on the pharmacokinetics of piperacillin-tazobactam was evaluated in 12 healthy adult subjects following administration of a single dose of VIBATIV 10 mg/kg, piperacillin-tazobactam 4.5 g, and both. Telavancin had no impact on the pharmacokinetics of piperacillin-tazobactam and piperacillin-tazobactam had no effect on the pharmacokinetics of telavancin. No dosage adjustment of telavancin or piperacillin-tazobactam is recommended when both drugs are coadministered.

#### **12.4 Microbiology**

Telavancin is a semisynthetic, lipoglycopeptide antibiotic. Telavancin exerts concentration-dependent, bactericidal activity against Gram-positive organisms in vitro, as demonstrated by time-kill assays and MBC/MIC (minimum bactericidal concentration/minimum inhibitory concentration) ratios using broth dilution methodology. In vitro studies demonstrated a telavancin post-antibiotic effect ranging from 1 to 6 hours against *S. aureus* and other Gram-positive pathogens.

Although telavancin is approximately 90% protein bound, the presence of human serum or human serum albumin has minimal impact on the in vitro activity of telavancin against staphylococci, streptococci, and vancomycin-susceptible enterococci.

#### Mechanism of Action

Telavancin inhibits bacterial cell wall synthesis by interfering with the polymerization and cross-linking of peptidoglycan. Telavancin binds to the bacterial membrane and disrupts membrane barrier function.

#### Interactions with Other Antibacterials

In vitro investigations demonstrated no antagonism between telavancin and amikacin, aztreonam, cefepime, ceftriaxone, ciprofloxacin, gentamicin, imipenem, meropenem, oxacillin, piperacillin/tazobactam, rifampin, and trimethoprim/sulfamethoxazole, when tested in various combinations against telavancin susceptible staphylococci, streptococci, and enterococci. This information is not available for other bacteria.

## Cross-Resistance

Some vancomycin-resistant enterococci have a reduced susceptibility to telavancin. There is no known cross-resistance between telavancin and other classes of antibiotics.

## Antibacterial Activity

Telavancin has been shown to be active against most isolates of the following microorganisms both in vitro and in clinical infections as described in the Indications and Usage section [see *Indications and Usage (1.1)*]:

### Facultative Gram-Positive Microorganisms

*Staphylococcus aureus* (including methicillin-resistant isolates)  
*Streptococcus pyogenes*  
*Enterococcus faecalis* (vancomycin-susceptible isolates only)  
*Streptococcus agalactiae*  
*Streptococcus anginosus* group (includes *S. anginosus*, *S. intermedius*, and *S. constellatus*)

Greater than 90% of the following microorganisms exhibit an in vitro MIC less than or equal to the telavancin-susceptible breakpoint for organisms of similar genus shown in Table 7. The safety and effectiveness of telavancin in treating clinical infections due to these microorganisms have not been established in adequate and well-controlled clinical trials.

### Facultative Gram-Positive Microorganisms

*Enterococcus faecium* (vancomycin-susceptible isolates only)  
*Staphylococcus haemolyticus*  
*Streptococcus dysgalactiae* subsp. *equisimilis*  
*Staphylococcus epidermidis*

## Susceptibility Test Methods

When available, the clinical microbiology laboratory should provide cumulative results of the in vitro susceptibility test results for antimicrobial drugs used in local hospitals and practice areas to the physician as periodic reports that describe the susceptibility profile of nosocomial and community-acquired pathogens. These reports should aid the physician in selecting the most effective antimicrobial.

### Dilution technique

Quantitative methods are used to determine antimicrobial minimal inhibitory concentrations (MICs). These MICs provide estimates of the susceptibility of bacteria to antimicrobial compounds. The MICs should be determined using a standardized procedure [see *References (15)*]. Standardized procedures are based on a dilution method (broth or agar) or equivalent with standardized inoculum concentrations and standardized concentrations of telavancin powder. The MIC values should be interpreted according to the criteria provided in Table 7.

### Diffusion technique

Quantitative methods that require measurement of zone diameters also provide reproducible estimates of the susceptibility of bacteria to antimicrobial compounds. One such standardized procedure requires the use of standardized inoculum concentrations [see *References (15)*]. This procedure uses paper disks impregnated with 30 mcg of telavancin to test the susceptibility of microorganisms to telavancin. The disk diffusion interpretive criteria are provided in Table 7.

Table 7: Susceptibility Interpretive Criteria for Telavancin

	Susceptibility Interpretive Criteria <sup>1</sup>					
	Minimal inhibitory concentration (mcg/mL)			Disk Diffusion zone diameter (mm)		
	S	I	R	S	I	R
<i>Staphylococcus aureus</i> (including methicillin-resistant isolates)	≤ 1	--	--	≥ 15	--	--
<i>Streptococcus pyogenes</i> <i>Streptococcus agalactiae</i> <i>Streptococcus anginosus</i> group	≤ 0.12	--	--	≥ 15	--	--
<i>Enterococcus faecalis</i> (vancomycin-susceptible isolates only)	≤ 1	--	--	≥ 15	--	--

<sup>1</sup> The current absence of resistant isolates precludes defining any results other than "susceptible"  
Isolates yielding results other than susceptible should be subjected to additional testing

A report of "susceptible" indicates that the antimicrobial is likely to inhibit growth of the pathogen if the antimicrobial compound in the blood reaches the concentrations usually achievable.

## Quality Control

Standardized susceptibility test procedures require the use of laboratory control microorganisms to monitor the performance of the supplies and reagents used in the assay, and the techniques of the individuals performing the test. Standard telavancin powder should provide the range of values noted in Table 8.

Quality control microorganisms are specific strains of organisms with intrinsic biological properties relating to resistance mechanisms and their genetic expression within bacteria; the specific strains used for microbiological quality control are not clinically significant.

Table 8: Acceptable Quality Control Ranges for Telavancin to be used in Validation of Susceptibility Test Results

	Acceptable Quality Control Ranges	
	Minimal Inhibitory Concentration (mcg/mL)	Disk Diffusion Zone Diameter (mm)
<i>Enterococcus faecalis</i> ATCC 29212	0.12-0.5	Not applicable
<i>Staphylococcus aureus</i> ATCC 29213	0.12-1	Not applicable
<i>Staphylococcus aureus</i> ATCC 25923	Not applicable	16-20
<i>Streptococcus pneumoniae</i> ATCC 49619 <sup>1</sup>	0.004-0.03	17-24

<sup>1</sup> This organism may be used for validation of susceptibility test results when testing *Streptococcus* spp. other than *S. pneumoniae*

## 13 NONCLINICAL TOXICOLOGY

### 13.1 Carcinogenesis, Mutagenesis, Impairment of Fertility

Long-term studies in animals to determine the carcinogenic potential of telavancin have not been performed.

Neither mutagenic nor clastogenic potential of telavancin was found in a battery of tests including: assays for mutagenicity (Ames bacterial reversion), an in vitro chromosome aberration assay in human lymphocytes, and an in vivo mouse micronucleus assay.

Telavancin did not affect the fertility or reproductive performance of adult male rats (exposed to telavancin for at least 4 weeks prior to mating) or female rats (exposed to telavancin for at least 2 weeks prior to mating).

Male rats given telavancin for 6 weeks, at exposures similar to those measured in clinical studies, displayed altered sperm parameters that were reversible following an 8-week recovery period.

### **13.2 Animal Toxicology and/or Pharmacology**

Two-week administration of telavancin in rats produced minimal renal tubular vacuolization with no changes in BUN or creatinine. These effects were not seen in studies conducted in dogs for similar duration. Four weeks of treatment resulted in reversible elevations in BUN and/or creatinine in association with renal tubular degeneration that further progressed following 13 weeks of treatment.

These effects occurred at exposures (based on AUCs) that were similar to those measured in clinical trials.

The potential effects of continuous venovenous hemofiltration (CVVH) on the clearance of telavancin were examined in an in vitro model using bovine blood. Telavancin was cleared by CVVH and the clearance of telavancin increased with increasing ultrafiltration rate [see *Overdosage (10)*].

## **14 CLINICAL TRIALS**

### **14.1 Complicated Skin and Skin Structure Infections**

Adult patients with clinically documented complicated skin and skin structure infections (cSSSI) were enrolled in two randomized, multinational, multicenter, double-blinded trials (Trial 1 and Trial 2) comparing VIBATIV (10 mg/kg IV every 24 hours) with vancomycin (1 g IV every 12 hours) for 7 to 14 days. Vancomycin dosages could be adjusted per site-specific practice. Patients could receive concomitant aztreonam or metronidazole for suspected Gram-negative and anaerobic infection, respectively. These trials were identical in design, enrolling approximately 69% of their patients from the United States.

The trials enrolled adult patients with cSSSI with suspected or confirmed MRSA as the primary cause of infection. The all-treated efficacy (ATe) population included all patients who received any amount of study medication according to their randomized treatment group and were evaluated for efficacy. The clinically evaluable population (CE) included patients in the ATe population with sufficient adherence to the protocol.



The ATe population consisted of 1,794 patients. Of these, 1,410 (78.6%) patients were clinically evaluable (CE). Patients with demographic and baseline characteristics were well-balanced between treatment groups and are presented in Table 9.

Table 9: Baseline Infection Types in Patients in Trials 1 and 2 – ATe Population

	<b>VIBATIV (N=884)<sup>1</sup></b>	<b>Vancomycin (N=910)<sup>1</sup></b>
Type of infection		
Major Abscess	375 (42.4%)	397 (43.6%)
Deep/Extensive Cellulitis	309 (35.0%)	337 (37.0%)
Wound Infection	139 (15.7%)	121 (13.3%)
Infected Ulcer	45 (5.1%)	46 (5.1%)
Infected Burn	16 (1.8%)	9 (1.0%)

<sup>1</sup> Includes all patients randomized, treated, and evaluated for efficacy

The primary efficacy endpoints in both trials was the clinical cure rates at a follow-up (Test of Cure) visit in the ATe and CE populations. Clinical cure rates in Trials 1 and 2 are displayed for the ATe and CE population in Table 10.

Table 10: Clinical Cure at Test-of-Cure in Trials 1 and 2 - ATe and CE Populations

	<b>Trial 1</b>			<b>Trial 2</b>		
	<b>VIBATIV</b>	<b>Vancomycin</b>	<b>Difference</b>	<b>VIBATIV</b>	<b>Vancomycin</b>	<b>Difference</b>
	<b>% (n/N)</b>	<b>% (n/N)</b>	<b>(95% CI)<sup>1</sup></b>	<b>% (n/N)</b>	<b>% (n/N)</b>	<b>(95% CI)<sup>1</sup></b>
<b>ATe</b>	72.5%	71.6%	0.9	74.7%	74.0%	0.7
	(309/426)	(307/429)	(-5.3, 7.2)	(342/458)	(356/481)	(-5.1, 6.5)
<b>CE</b>	84.3%	82.8%	1.5	83.9%	87.7%	-3.8
	(289/343)	(288/348)	(-4.3, 7.3)	(302/360)	(315/359)	(-9.2, 1.5)

<sup>1</sup>95% CI computed using a continuity correction

The cure rates by pathogen for the microbiologically evaluable (ME) population are presented in Table 11.

Table 11: Clinical Cure Rates at the Test-of-Cure for the Most Common Pathogens in Trials 1 and 2 – ME Population<sup>1</sup>

	<b>VIBATIV % (n/N)</b>	<b>Vancomycin % (n/N)</b>
<i>Staphylococcus aureus</i> (MRSA)	87.0% (208/239)	85.9% (225/262)

	<b>VIBATIV % (n/N)</b>	<b>Vancomycin % (n/N)</b>
<i>Staphylococcus aureus</i> (MSSA)	82.0% (132/161)	85.1% (131/154)
<i>Enterococcus faecalis</i>	95.6% (22/23)	80.0% (28/35)
<i>Streptococcus pyogenes</i>	84.2% (16/19)	90.5% (19/21)
<i>Streptococcus agalactiae</i>	73.7% (14/19)	86.7% (13/15)
<i>Streptococcus anginosus</i> group	76.5% (13/17)	100.0% (9/9)

<sup>1</sup> The ME population included patients in the CE population who had Gram positive pathogens isolated at baseline and had central identification and susceptibility of the microbiological isolate(s)

In the two cSSSI trials, clinical cure rates were similar across gender and race. Clinical cure rates in the telavancin clinically evaluable (CE) population were lower in patients  $\geq 65$  years of age compared to those  $< 65$  years of age. A decrease of this magnitude was not observed in the vancomycin CE population. Clinical cure rates in the telavancin CE population  $< 65$  years of age were 503/581 (86.6%) and in those  $\geq 65$  years were 88/122 (72.1%). In the vancomycin CE population clinical cure rates in patients  $< 65$  years of age were 492/570 (86.3%) and in those  $\geq 65$  years was 111/137 (82.0%). Clinical cure rates in the telavancin-treated patients were lower in patients with baseline CrCl  $\leq 50$  mL/min compared to those with CrCl  $> 50$  mL/min. A decrease of this magnitude was not observed in the vancomycin-treated patients [see *Warnings and Precautions (5.4)*].

## 15 REFERENCES

1. Clinical and Laboratory Standards Institute (CLSI). Methods for Dilution Antimicrobial Susceptibility Tests for Bacteria that Grow Aerobically; Approved Standard – 8<sup>th</sup> ed., CLSI document M7-A8, CLSI, 940 West Valley Rd., Suite 1400, Wayne, PA. 19087-1898, 2009.
2. CLSI. Performance Standards for Antimicrobial Disk Susceptibility Tests, Approved Standard – 10<sup>th</sup> ed. CLSI document M2-A10; CLSI, Wayne, PA. 19087-1898, 2009.

3. CLSI. Performance Standards for Antimicrobial Susceptibility Testing - 19<sup>th</sup> Informational Supplement. CLSI document M100-S19, CLSI, Wayne, PA. 19087-1898, 2009.

## 16 HOW SUPPLIED/STORAGE AND HANDLING

- Cartons of 10 individually packaged 250 mg single-dose vials (NDC 0469-3525-30)
- Cartons of 10 individually packaged 750 mg single-dose vials (NDC 0469-3575-50)

Store original packages at refrigerated temperatures of 2 to 8°C (35 to 46 °F). Excursions to ambient temperatures (up to 25 °C (77 °F)) are acceptable. Avoid excessive heat.

## 17 PATIENT COUNSELING INFORMATION

*See Medication Guide.*

### Use during Pregnancy and by Women of Childbearing Potential

Women of childbearing potential (those who have **not** had: complete absence of menses for at least 24 months or medically confirmed menopause, medically confirmed primary ovarian failure, a history of hysterectomy, bilateral oophorectomy, or tubal ligation) should:

- Be informed about the potential risk of fetal harm if VIBATIV is used during pregnancy
- Have a pregnancy test prior to administration of VIBATIV
- If not pregnant, use effective contraceptive methods to prevent pregnancy during VIBATIV treatment
- Notify their prescribing physician/ healthcare provider if they become pregnant during VIBATIV treatment

### Pregnancy Registry

There is a pregnancy registry that monitors pregnancy outcomes in women exposed to VIBATIV during pregnancy. Physicians are encouraged to register pregnant patients, or pregnant women may enroll themselves in the pregnancy registry by calling 1-888-658-4228.

### Diarrhea

Diarrhea is a common problem caused by antibiotics that usually ends when the antibiotic is discontinued. Sometimes after starting treatment with antibiotics, patients can develop watery and bloody stools (with or without stomach cramps and fever) even as late as 2 or more months after having received the last dose of the antibiotic. If this occurs, patients should contact their physician as soon as possible.

### Correct Use of Antibacterial Drugs

Patients should be counseled that antibacterial drugs including VIBATIV should only be used to treat bacterial infections. They do not treat viral infections (eg, the common cold). When VIBATIV is prescribed to treat a bacterial infection, patients should be told that although it is common to feel better early in the course of therapy, the medication should be taken exactly as directed. Skipping doses or not completing the full course of therapy may: (1) decrease the effectiveness of immediate treatment, and (2) increase the likelihood that the bacteria will develop resistance and will not be treatable by VIBATIV or other antibacterial drugs in the future.

### Common Adverse Effects

Patients should be informed about the common adverse effects of VIBATIV including taste disturbance, nausea, vomiting, headache, and foamy urine. Patients should be instructed to inform their healthcare provider if they develop any unusual symptom, or if any known symptom persists or worsens. Patients should be instructed to inform their healthcare provider of any other medications they are currently taking with VIBATIV, including over-the-counter medications.

### **Manufactured for:**

Theravance, Inc.  
South San Francisco, CA 94080

### **Marketed by:**

Astellas Pharma US, Inc.  
Deerfield, IL 60015

US Patent Nos. 6,635,618 B2; 6,858,584 B2; 6,872,701 B2; 7,008,923 B2; 7,208,471 B2; 7,351,691 B2; 7,531,623 B2; and 7,544,364 B2

VIBATIV is a trademark of Astellas Pharma Inc.  
09I014-VIB-WPI