



Lalor Lake

Potential Significant New Zinc Discovery

Investor Conference Call and Webcast  
October 24, 2007

**HUDBAY**  
MINERALS INC

# Speakers



Peter Jones  
President & CEO



Kelly Gilmore  
Chief Exploration Geologist



# Forward-looking Information

This presentation contains "forward-looking information" within the meaning of applicable Canadian securities legislation. Forward-looking information includes, but is not limited to, statements with respect to future exploration plans and possible results with respect to the Lalor Lake mineral property as well as future plans with respect to the Bur Deposit project. Generally, forward-looking information can be identified by the use of forward-looking terminology such as "plans", "expects", or "does not expect", "is expected", "budget", "scheduled", "estimates", "forecasts", "intends", "anticipates", or "does not anticipate", or "believes" or variations of such words and phrases or state that certain actions, events or results "may", "could", "would", "might", or "will be taken", "occur", or "be achieved". Forward-looking information is subject to known and unknown risks, uncertainties and other factors that may cause the actual results, level of activity, performance or achievements of HudBay to be materially different from those expressed or implied by such forward-looking information, including risks associated with the mining industry such as economic factors as they effect exploration, future commodity prices, actual results of current exploration activities, government regulation, environmental risks, permitting timelines, capital expenditures, changes in project parameters as plans continue to be refined as well as those factors discussed in the section entitled "Risk Factors" in HudBay's Annual Information Form for the year ended December 31, 2006, available on [www.sedar.com](http://www.sedar.com). Although HudBay has attempted to identify important factors that could cause actual results to differ materially from those contained in forward-looking information, there may be other factors that cause results not to be as anticipated, estimated or intended. There can be no assurance that such information will prove to be accurate, as actual results and future events could differ materially from those anticipated in such information. Accordingly, readers should not place undue reliance on forward-looking information. HudBay does not undertake to update any forward-looking information, except in accordance with applicable securities laws.



# Lalor Lake Overview



Peter R. Jones

President & CEO



# Lalor Lake Overview

- Significant new zinc discovery
- Estimate of potential tonnes and grade\*:

	Tonnes (millions)	Zinc %	Copper %
Main Zone	9.5 - 10.5	9.5 - 10.5	0.6 - 0.7
Footwall Zones	8.5 - 9.5	6.5 - 7.0	0.7 - 0.8
<b>Total</b>	<b>18.0 - 20.0</b>	<b>7.7- 8.8</b>	<b>0.7 - 0.8</b>

- Deposit is open in 2 directions

\*The estimated quantity and grades of the Lalor Lake potential mineral deposit are conceptual in nature. There has been insufficient exploration to define a mineral resource and it is uncertain if further exploration will result in Lalor lake being delineated as a mineral resource. See HudBay Mineral Inc.'s news release dated October 23, 2007 for the basis on which the disclosed potential quantity and grade have been determined.



# Lalor Lake Overview

- 15 km's from Snow Lake Concentrator
- 3 km's from – Haul Road/Power Line
- Immediately Adjacent Mines – 9.8 Million Tonnes Mined
- Extensive Experience Mining in Area
- Well Positioned to Evaluate a Production Decision



# Lalor Lake Update

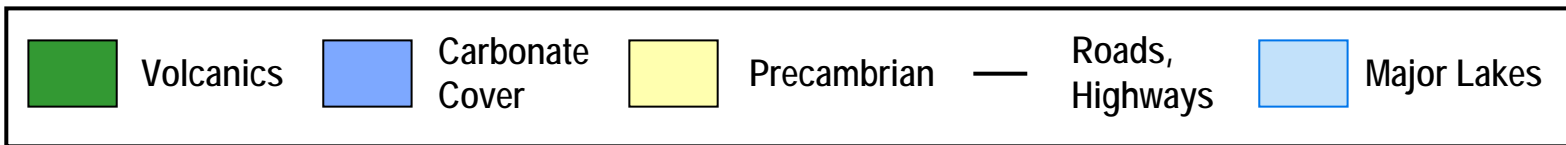
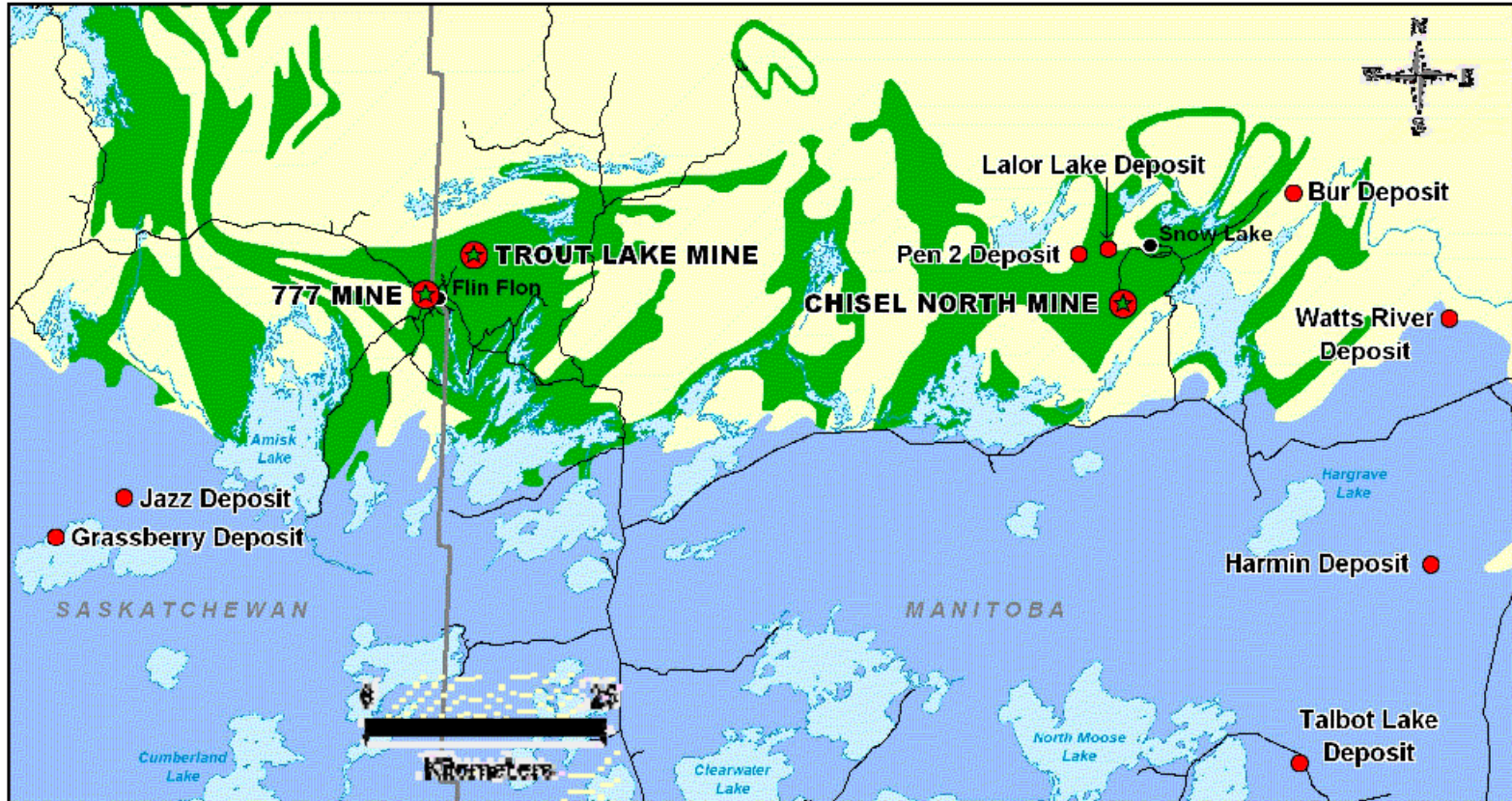


Kelly V. Gilmore

Chief Exploration Geologist

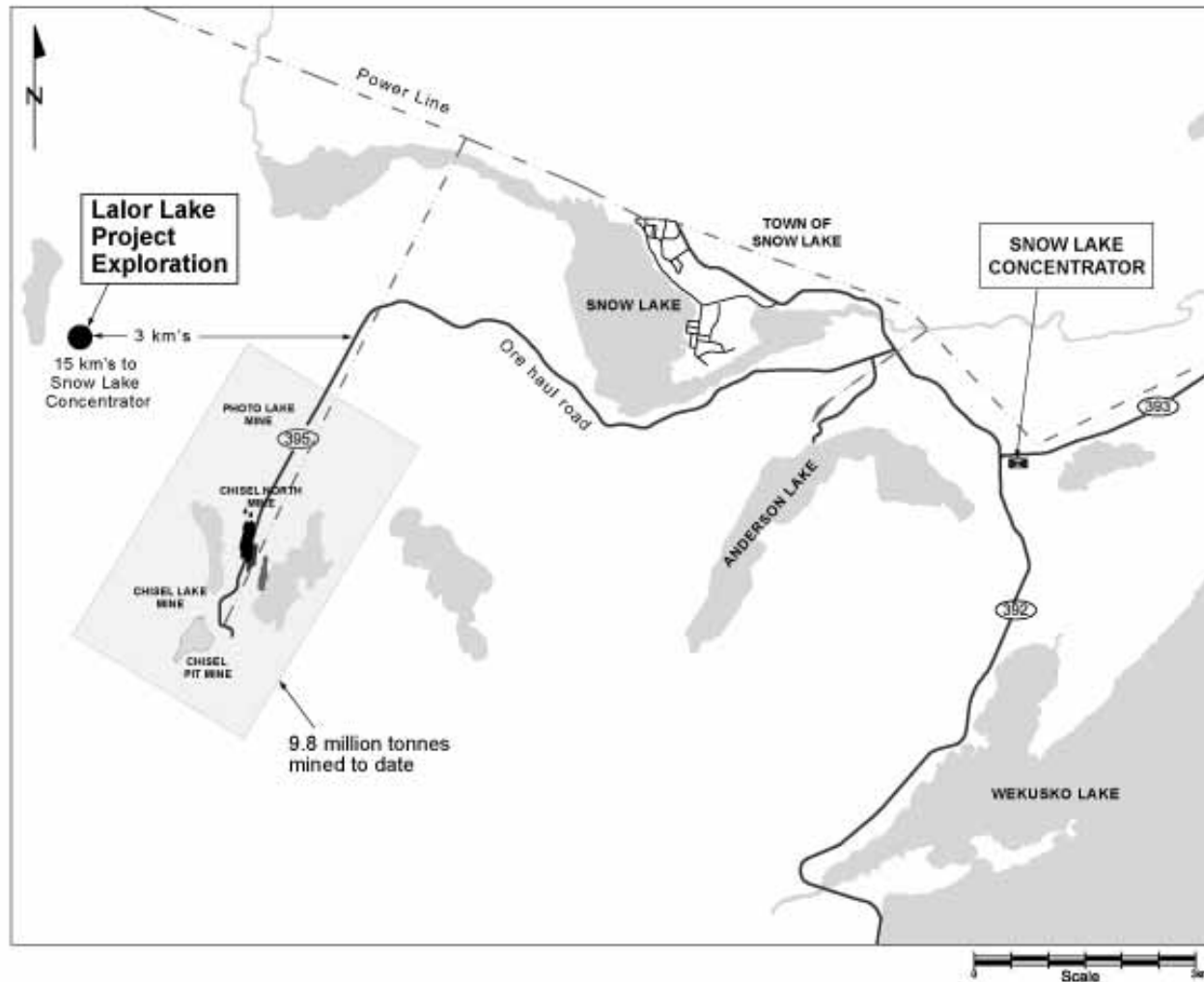


# Flin Flon Greenstone Belt

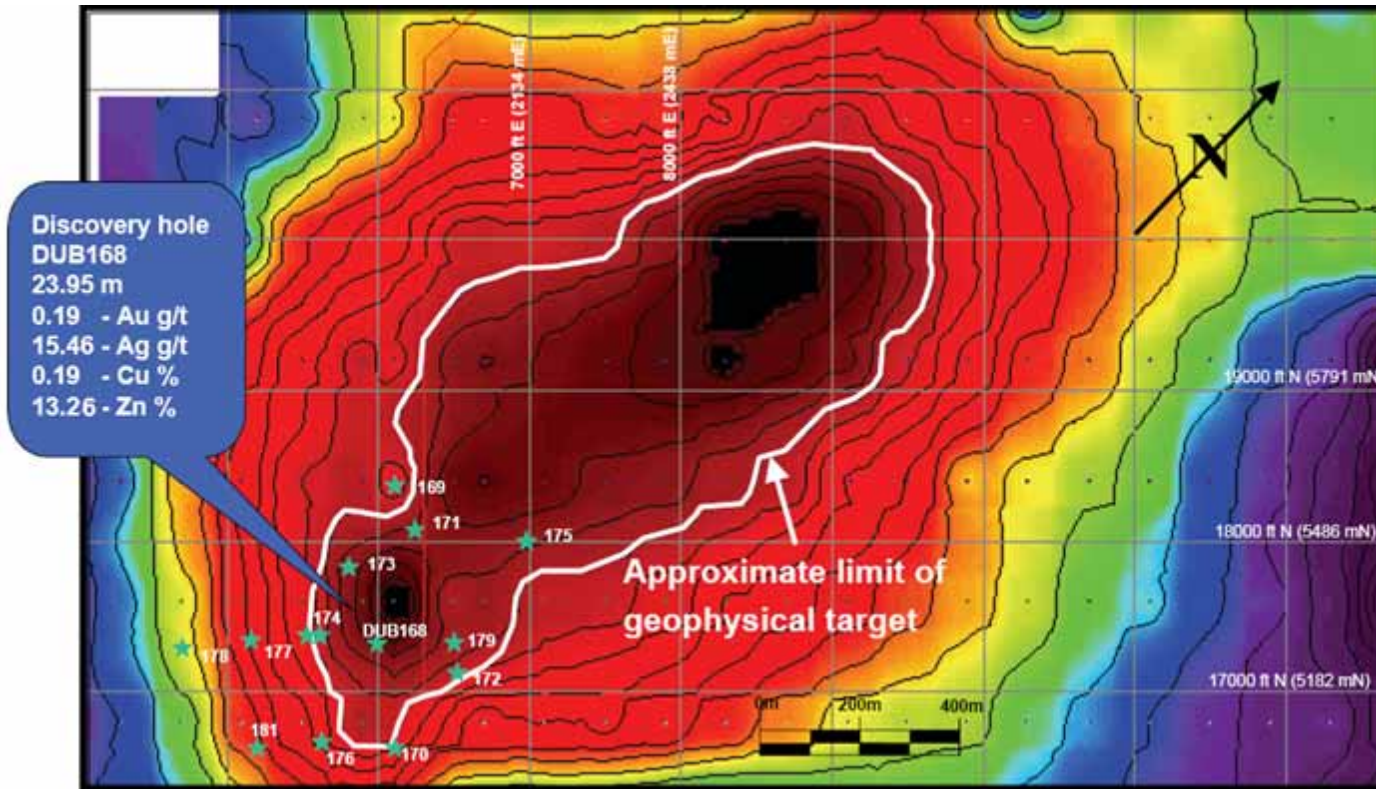




# Snow Lake Area - Location



# Lalor Lake Discovery



★ Stars indicate intersection point in the plane of the mineralization

ft N = feet North (Grid Northing)

mN = metres North (Grid Northing)

Ft E = feet East (Grid Easting)

mN = metres North (Grid Northing)

ERL Grid coordinates in feet  
(with metrics equivalents)

Updated August 15, 2007

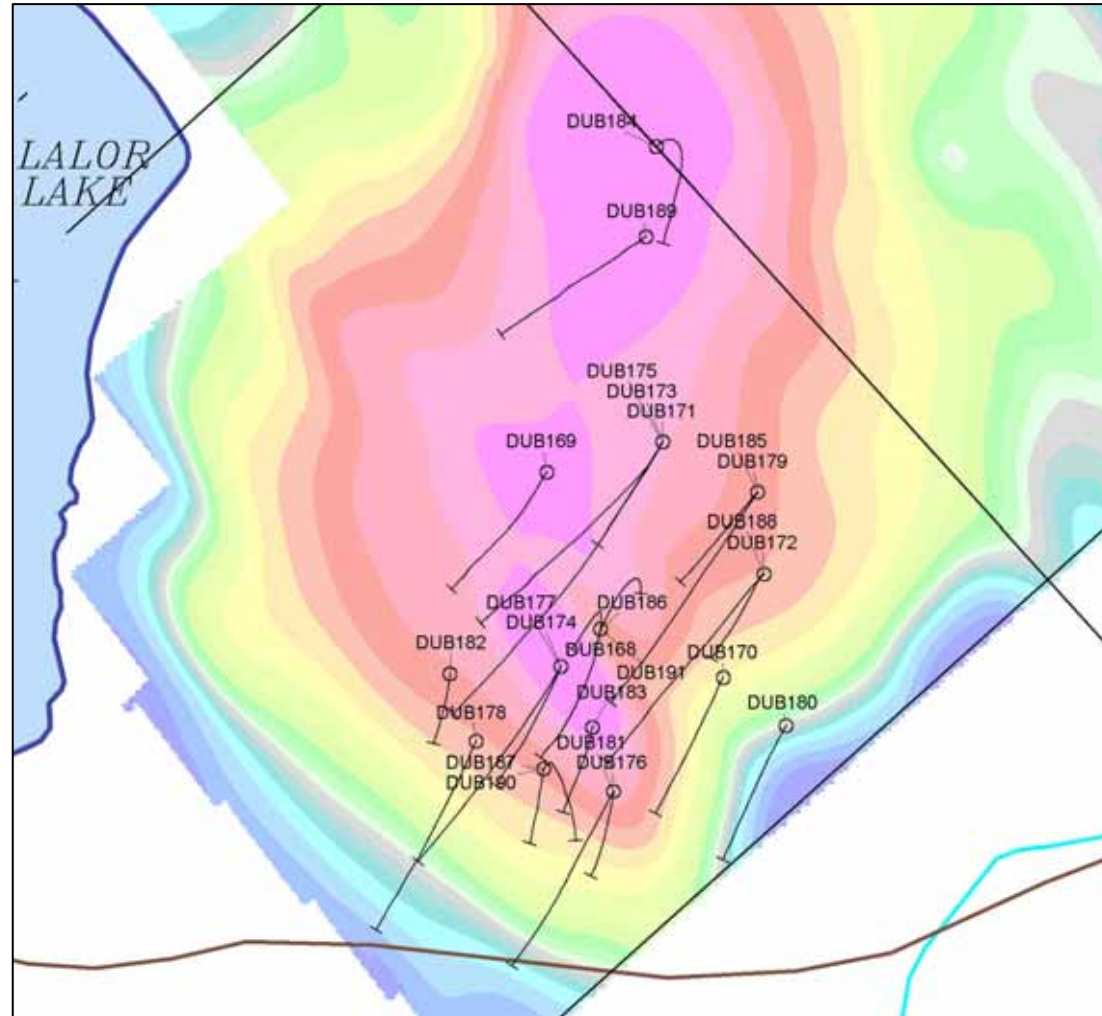
**HUDBAY**  
**MINERALS INC**

Plan View Projection  
Looking Down on ERL Grid

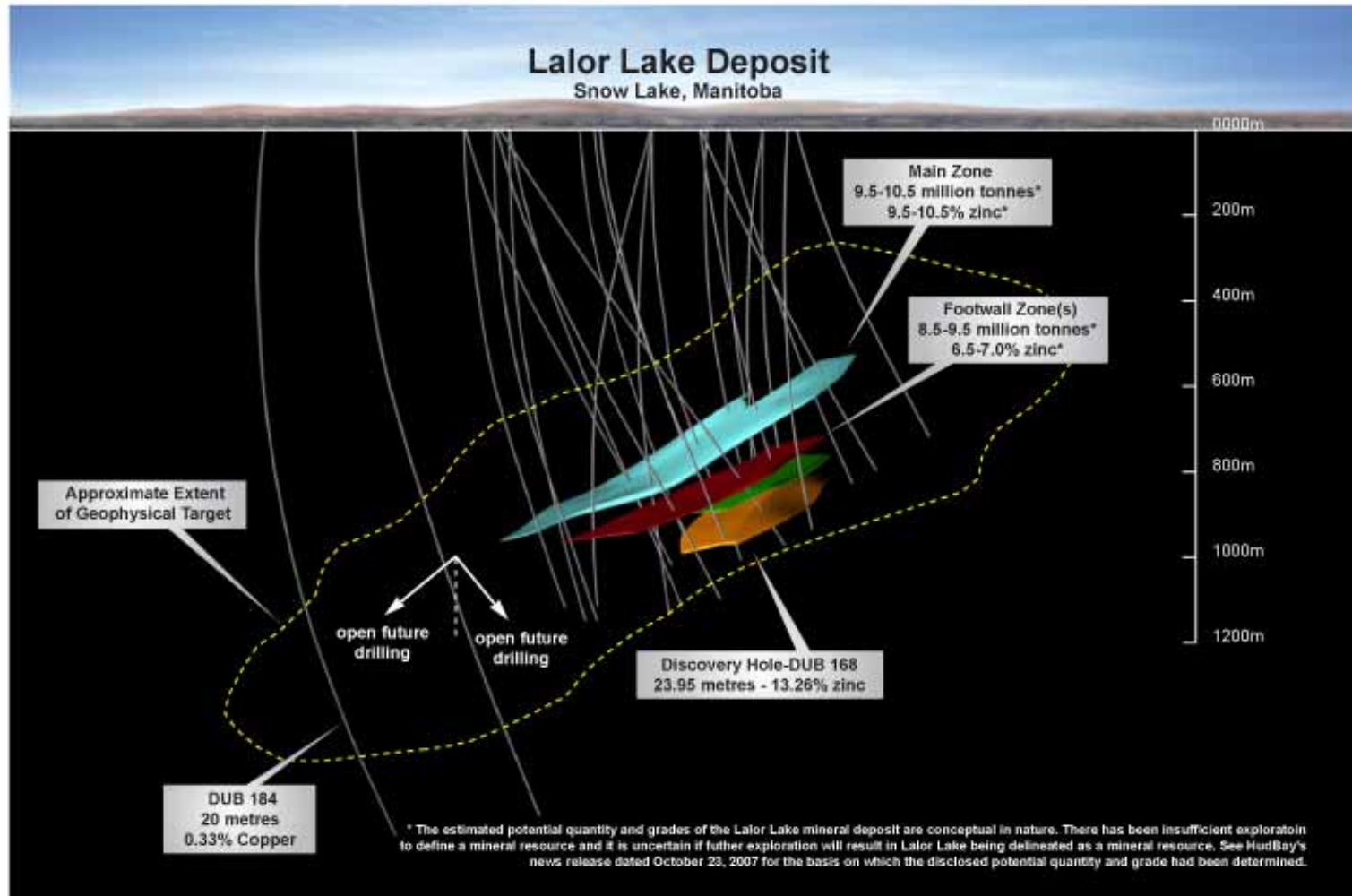
- Fixed loop ground electromagnetic geophysical anomaly
- Discovery hole DUB 168 – 23.95 metres of 13.26% zinc

Note: Plan view projection reflects first 14 holes drilled

# Lalor Lake Geophysics and Drill Holes



# Lalor Lake Deposit Section



# Lalor Lake Exploration Priorities

- Continue drilling in 2007
- Define the deposit on two open sides
- Do further in-fill drilling
- Do NI 43-101 compliant resource estimate
- Collect data for potential feasibility study



# HudBay Driving Value Through Exploration

- 2007 Program -- \$45 million
- H1 2007 Update:
  - 56,000 metres drilled
  - Mineral deposits, structural targets and geophysical targets
- Option Agreements -- Leveraging Exploration
  - VMS Ventures
    - Reed Lake Property
    - Up to 70% back-in right
  - Other Option Agreements
    - Murgor Resources
    - Rockcliff Resources
    - Halo Resources



# Lalor Lake Summary

- **Strongly Validates Organic Growth Strategy**
- **Estimate of Potential 18-20 Million Tonnes**
- **Attractive Potential Grades**
- **Drilling to Allow NI 43-101 ASAP**
- **Fast-tracking the Opportunity**





Lalor Lake

Potential Significant New Zinc Discovery