

Hong Kong | WT Fu / Winnie Tang | +852 2822 8146 / 129 | wt.fu@sothebys.com / winnie.tang@sothebys.com

New York | Lauren Gioia | +1 212 606 7176 | lauren.gioia@sothebys.com

London | Simon Warren | +44 20 7293 5166 | simon.warren@sothebys.com

SOTHEBY'S HONG KONG FINE CHINESE CERAMICS AND WORKS OF ART AUTUMN SALE SERIES 2011 WILL BE HELD ON 5 OCTOBER

FEATURING THE MEIYINTANG COLLECTION PART TWO -
ONE OF THE FINEST PRIVATE COLLECTIONS IN THE WORLD
ICONIC PIECES OF IMPERIAL CHINESE PORCELAIN FROM THE EARLY
15TH TO LATE 18TH CENTURIES



Left: A Superb Large Famille-Rose Prunus and Rose Charger, Mark and Period of Yongzheng (Est. HK\$15-20 million / US\$1.9-2.56million)
Right: A Fine and Rare Famille-Rose 'Peach' Vase, Tianqiuping, Seal Mark and Period of Qianlong (Est. HK\$80-120 million / US\$10.3-15.4million)

Hong Kong, September 2011 Sotheby's Hong Kong is delighted to announce that Fine Chinese Ceramics and Works of Art Autumn Sale Series 2011 will be held on 5 October, 2011 at the Hong Kong Convention and Exhibition Centre. Leading the season is a prestigious European collection of Chinese Art - *The Meiyintang Collection, Part II - An Important Selection of Imperial Chinese Porcelains*. Together with a various-owner sale, a total of **over 310 lots** will be offered with an **estimated total value of over HK\$1.17 billion / US\$150 million***.

Nicolas Chow, Deputy Chairman of Sotheby's Asia and Sotheby's International Head of Chinese Ceramics and Works of Art, said, "We are pleased to offer this season exceptional objects from a variety of prestigious private collections. From the Meiyintang collection - possibly Europe's grandest private collection of Chinese porcelain-, we will offer this season 40 pieces from the Ming and Qing dynasties, including a large early 15th century blue and white vase decorated with various fruits as well as a massive 18th century famille-rose vase decorated with peaches. We also have the privilege to bring to the market a selection from two private Hong Kong collections, the Huaihaitang collection on the one hand which comprises a superb pair of famille-rose lime-green ground Qianlong vases, and on the other a group of exceptional enamels, comprising a unique massive Beijing enamel on copper censer made for the Yongzheng Emperor. Other highlights include a rare 14th century 'dragon' seal carved for the Yongzheng Emperor that was passed down in the family of Emile Guimet and an exquisite pair of Beijing enamel boxes decorated with Western figures. Altogether, this forms one of the finest selections of Imperial porcelain and works of art ever to come on the market in a single auction."

(A) The Meiyintang Collection, Part II - An Important Selection of Imperial Chinese Porcelains

The Meiyintang collection ranks among the finest private collections of Chinese ceramics in the world and Sotheby's is honoured to offer for the second time in Hong Kong a selection of some of its most iconic pieces. The selection emphasises the most celebrated and rich periods in the history of the Imperial kilns. The sale offers **over 40 lots** with an **estimated total value of HK\$430 million / US\$55 million**.



An Outstanding Blue and White Vase with Fruit Sprays, Meiping Ming Dynasty, Yongle Period

Estimate: HK\$80 - 120 million / US\$10.3 - 15.4 million

Height: 36.5 cm.

Meiping decorated with fruit sprays are well known from the Yongle period. This large Yongle period meiping, with its elaborate decoration of ten fruit sprays, most likely predates the well-known smaller vases of this form. Only one companion piece to the present vase appears to be recorded, a covered meiping in the Palace Museum, Beijing. The present vase supplies vivid testimony to the success of these undertakings - its rich repertoire of fruit and flower motifs make it a masterpiece of Yongle porcelain art.

An Extraordinary Blue and White 'Dragon' Moonflask

Ming Dynasty, Yongle Period

Estimate: HK\$50 – 80 million / US\$6.4 - 10.3 million

Height: 44.2 cm.

Moonflasks of this daring, massive form are testimony to the grand design concepts realised by the Ming imperial kilns during the Yongle reign, and the mighty dragons with their bold upturned snouts, bushy manes, writhing, scaly bodies, spiky spines and outsized claws reflect the pioneering spirit that reigned not only at the porcelain manufactories, but characterises the period as a whole. The impressive moonflask is one of only six known of this design and among the very few Ming vases of this form ever to come to the market.



A Fine and Rare Famille-Rose 'Peach' Vase, Tianqiuping Seal Mark and Period of Qianlong (Right)

Estimate: HK\$80 - 120 million / US\$10.3 - 15.4 million

Height: 51 cm

A Superb Large Famille-Rose Prunus and Rose Charger Mark and Period of Yongzheng (Left)

Estimate: HK\$15 – 20 million / US\$1.9 - 2.56 million

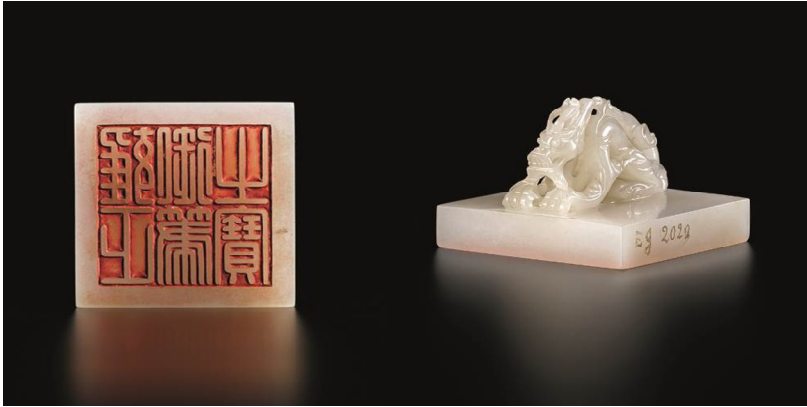
Diameter: 50.3 cm.



The pinnacle of refinement in porcelain was reached during the first part of the Qing dynasty, when a new palette of opaque enamels was introduced in the Chinese potter's repertoire. The large Yongzheng dish decorated with blossoming prunus and rose branches and the massive globular vase superbly painted with nine peaches both represent exceptional examples from the period. The superb pattern of twin flowering and fruiting peach trees extending around the sides of this massive vase became one of the best-loved porcelain designs in the Qianlong period. The colour combination has an irresistible appeal, the painting is magnificent, and the design of two trees with different blossoms and bark, of which the interlaced branches together bear nine fruit, is sophisticated in its concept and reassuring in its eternal message conveying affluence and long life.

(B) Fine Chinese Ceramics and Works of Art

Comprising **over 270 lots** with an estimated total value of **over HK\$750 million / US\$96 million**, the sale of Fine Chinese Ceramics and Works of Art includes a number of important Imperial works of art and a special featured session - ***Beijing Enamels and Gilt Bronzes from A Distinguished Collector.***



An Extremely Rare Imperial White Jade 'Yongzheng Yubi Zhi Bao' Seal

The Seal, Yuan Dynasty

The Seal Face, Qing Dynasty, Yongzheng Period

Provenance: The Collection of Emile Guimet

Estimate: HK\$20 – 30 million / US\$2.6 - 3.9 million

Size: 5.5cm. by 5.6cm.

The flawless white jade seal carved with a single dragon dates to the Yuan dynasty. The Yongzheng Emperor was so fond of it that he had the seal face carved for his own use with the characters *Yongzheng Yubi Zhibao* ('Treasure in the Imperial hand of the Yongzheng Emperor') to be impressed on his own calligraphic works. Of the three great Qing Emperors Kangxi, Yongzheng and Qianlong, seals from the Yongzheng period are by far the rarest and it is the first time that one comes to the market.

The Magnificent Pair of Beijing Enamelled and Cloisonne Boxes and Covers

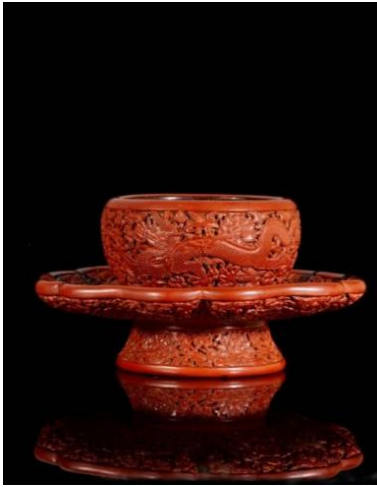
Marks and Period of Qianlong

Estimate: HK\$30 – 40 million / US\$3.85m - 5.13 million

8cm. by 8cm.

The magnificent pair of Imperial enamel boxes illustrates Emperor Qianlong's fascination with European subjects. The romanticised vignettes of ladies and children and the manner in which they are rendered were brought to China by Jesuits who worked at the court of the Qing Emperors.





An Exceptional Early Ming Cinnabar Lacquer 'Dragon' Bowl Stand

Incised Mark and Period of Yongle

Estimate: HK\$20 – 30 million / US\$2.56m - 3.85 million

Height: 16cm.

The exceptional cinnabar lacquer bowl stand made for the Yongle emperor and decorated with mighty dragons ranks among the finest cinnabar lacquer pieces to come to the market in recent years. This unrecorded lacquer stand has a counterpart of the same form but decorated with phoenix, previously in the Lee Family collection.

An Imperial Polychrome Qiangjin Lacquer Stand

Ming Dynasty, 15th / 16th Century

Estimate HK\$6 – 8 million / US\$769,230 - 1.03 million

Height: 85cm.

This large Ming dynasty lacquer incense stand decorated in *qiangjin* technique (painted, incised and gilt lacquer) with a bird and peaches on the top appears to be unique. In terms of subject matter, it relates closely to porcelain and cloisonné pieces of the early Ming period.



An Important Massive Gilt Copper Alloy Figure of Yamantaka

Ming Dynasty, 15th Century

Estimate: HK\$65 – 80 million / US\$8.3 - 10.3million

Height: 99 cm.

This magnificent and important Chinese gilt bronze represents one of the most formidable deities in the Tibetan Buddhist pantheon, Yamantaka Vajrabhairava, the fearsome emanation of the bodhisattva Manjushri, lord of transcendent wisdom. Only a small number of monumental mid-fifteenth century tantric bronzes, such as the Vajrabhairava, are recorded. All of them, including the present example, were formerly in the celebrated collection G. sold in Hôtel Drouot, Paris, in the early twentieth century.



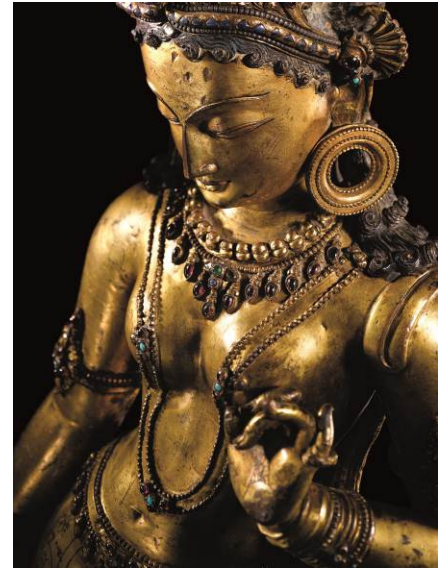
A Sublime Large Gilt-Copper Figure of Tara

Nepalese, 13th Century

Estimate Upon Request

Height: 72 cm.

This sublime figure is one of the most enchanting of all Nepalese sculptures of Tara, the Buddhist goddess of salvation. The female form is so well conceived that only serene expressions of divinity remind us of her spiritual nature, a temperament instilled by the sculptor that conveys Tara's compassion for the devotees who have gazed upon this magical image over centuries. While her expression is contemplative, her gestures are of generosity and openness to her worshippers. The right hand is held in the varada mudra expressing charity and refuge, and the left in the vitarka mudra of debate and religious instruction. Her posture is relaxed and fluid, emphasising the rounded female form with graceful poise and balance. The youthful appearance of the goddess belies the depth of compassion and spirituality imbued in the statue: she is described in the sacred texts as a maiden of a mere sixteen years of age. Exquisite jewels adorn her naked torso, and her diaphanous skirt is delightfully decorated with floral sprays, jewel-bearing elephants, wish-granting horses and mythical beasts. The bronze embodies the sensuous quality of Nepalese sculpture, manifest in the voluptuous female form and an overwhelming sense of engagement with the viewer.



An Exquisite Pair of Famille-Rose Green-Ground Vases

Seal Mark and Period of Qianlong

Height: 36.5 cm.

Estimate: HK\$35 – 45 million / US\$4.5 million - 5.8 million

The Qianlong emperor took an active interest in the work of the various imperial manufactories in his empire, particularly the Jingdezhen imperial kilns, bringing his personal influence to steer the workshop's artistic direction according to his taste for ornamentation and show. By working closely with Tang Ying, his virtuoso kiln supervisor, he encouraged potters at the imperial kilns to explore a wide range of shapes, colours and designs in their repertoire. As a result, a range of innovative wares were produced, of which this pair from the Huaihaitang collection is a particularly successful example.

The overall design spreads around the vase with ease to present an elegant vessel on which to attach the extraordinarily-crafted ruyi handles with suspending tassels. The appearance of ruyi sceptres as handles on vases was clearly a response to the Qianlong emperor's predilection for the idiosyncratic. The ruyi sceptre handles and decorative motifs reveal the Qianlong emperor's

infatuation with portents of good fortune. The combination of lotus flowers, bats, lingzhi and ruyi form the rebus ruyi wanshou, meaning 'longevity as your wish', and *Hongfu Qitian*, which translates as 'your fortune as high as the sky'.

Beijing Enamels and Gilt Bronzes from A Distinguished Collector

This selection of Beijing enamels and gilt bronzes comes from an Asian collector who has been building his collection for over 40 years. The group consists of three imperial Beijing enamels made in the Beijing Palace Workshops during the Yongzheng and Qianlong periods, and are among the largest sizes of enamels made in Beijing.



An Extremely Rare Massive Turquoise Beijing Enamel Censer and Cover, Mark and Period of Yongzheng

Height: 63.5 cm.

Estimate: HK\$35 - 45 million / US\$4.5 million - 5.8 million

The production of enamelled ware was of great importance to Yongzheng who inherited his father's, the Kangxi emperor, interest and love for these highly decorative and imposing wares. It was during Kangxi's reign that the Manufacturing Bureau was established in Wuyin Dian under the auspices of the Imperial Household Department to produce enamelled porcelain wares used within the Palace.

The present impressive large censer represents the apogee and ultimate technical achievement of imperial enamel craftsmanship during the reign of the Yongzheng emperor. To produce a ware of this imposing large size with enamelled decoration of such high quality required the knowledge and skills of artists who could be found in only one place – the Enamel Workshop located within the Forbidden City in the capital. This censer was most likely a centrepiece for a five-piece altar set, flanked by a pair of candlesticks and two vases.

An Exceptionally Rare Pair of Large Yellow Beijing Enamel Candlesticks

Marks and Period of Qianlong

Height: 62 cm.

Estimate: HK\$25 - 35 million / US\$3.2 million - 4.5 million

The striking features of the present pair of candlesticks are their exceptionally large size and fine painted enamelling. They are the products of the Imperial Palace Workshop where such impressive vessels were made on the orders of the Emperor and the court. Candlesticks of this type belonged to a five-piece altar garniture made



for one of the temples or shrines where the Qianlong emperor and his family worshipped. Altar garnitures were placed in official sites such as the Temple of Ancestors and the Hall of Ancestors situated in the Forbidden City, and in non-official halls including the Shouhuangdian located in Jinshan, the park that lay immediately north of the Shenwu gate within the grounds of the Imperial Palace.

* Estimates do not include buyer's premium

Images available upon request | Press releases are now available at sothebys.com

NOTES TO EDITORS

Auction Date	Auction Room	Category	Exhibition
1 Oct			
12pm	Room 2	Wine - The Classic Cellar from A Great American Collector VIII	--
2 Oct^			
10am	Room 2	Wine - Fine & Rarest Wines, Including The Ultimate Nine from the Bordeaux Winebank Collection	--
7pm	Room 1	The Ullens Collection - Experimentation and Evolution	1-2 Oct (until 5pm)
3 Oct			
10am	Room 1	Modern and Contemporary Southeast Asian Paintings	1-2 Oct
2:30pm	Room 1	20th Century Chinese Art	1-3 Oct (until 1 pm)
6pm	Room 1	Contemporary Asian Art (Various-Owner Sale)	1-3 Oct (until 4pm)
4 Oct^			
10am / 2pm	Room 1	Fine Chinese Paintings	1-3 Oct
3pm	Room 2	An Auction To Benefit the University of Oxford China Centre	1-3 Oct
5 Oct^			
10am	Room 1	The Meiyintang Collection, Part II - An Important Selection of Imperial Chinese Porcelains	1-4 Oct
11:30am / 3pm	Room 1	Fine Chinese Ceramics and Works of Art (Various-owner sale)	1-4 Oct
1pm	Room 2	Anita Mui - Jewels and Watches From the Estate	1-4 Oct
2:30pm / 5:30pm	Room 2	Magnificent Jewels and Jadeite	1-4 Oct
6 Oct			
10am / 2pm	Room 1	Important Watches	1-5 Oct

B) Sotheby's Hong Kong Autumn Sales 2011 Exhibition and Auction Venue

Hall 3, Hong Kong Convention and Exhibition Centre (New Wing)
1 Expo Drive, Wan Chai, Hong Kong

C) Travelling Exhibitions in Asia

Date	Cities	Venue
16 - 17 Sep	Shanghai	The Portman Ritz-Carlton Shanghai
19 - 20 Sep	Beijing	The Ritz-Carlton Beijing, Financial Street
24 - 25 Sep	Taipei	Fubon International Convention Centre