



**ACI Worldwide  
June 30, 2016  
Quarterly Results**

**July 28, 2016**

## Private Securities Litigation Reform Act of 1995 Safe Harbor For Forward-Looking Statements

This presentation contains forward-looking statements based on current expectations that involve a number of risks and uncertainties. The forward-looking statements are made pursuant to safe harbor provisions of the Private Securities Litigation Reform Act of 1995. A discussion of these forward-looking statements and risk factors that may affect them is set forth at the end of this presentation. The Company assumes no obligation to update any forward-looking statement in this presentation, except as required by law.



## **QUARTER IN REVIEW**

**Phil Heasley**  
Chief Executive Officer

# Q2 2016 in Review

- Overall recurring revenue grew 5%, adjusted for CFS
- SaaS bookings grew 16%, adjusted for CFS
- Seeing traction with Universal Payments
- New European data center ready for launch
- Reiterating 2016 guidance





## **FINANCIAL REVIEW**

**Scott Behrens**  
**Chief Financial Officer**

# Key Takeaways from the Quarter

- Bookings
  - SaaS bookings grew 16% compared to Q2 last year and were offset by declines in on-premise software bookings resulting in an overall bookings decrease of 26%.
  - Q3 bookings have started strong and we continue to expect full year net new bookings growth to be in the high single digits
- Backlog
  - 12-month backlog of \$851 million, down \$5 million from Q1 2016
  - 60-month backlog of \$4 billion, up \$45 million from Q1 2016
  - Both numbers adjusted for FX
- Revenue Growth
  - Recurring revenue grew 5% over last year's Q2, excluding CFS, offset by timing of non-recurring revenue which resulted in an overall revenue decline of 8%
- Debt and Liquidity
  - Operating free cash flow grew to \$13 million, up from negative \$7 million in Q2 last year
  - Ended the quarter with \$52 million in cash and \$735 million in debt
  - \$78 million remaining on share repurchase authorization



# Reaffirming Guidance

	2016 Non-GAAP Guidance	
	Low	High
<b>Revenue - excluding CFS</b>	990	1,020
<b>Adjusted EBITDA - excluding CFS</b>	265	275

\$'s in millions

- **Guidance**

- Revenue and adjusted EBITDA range excludes the contribution of CFS for January 1 through March 3, 2016
- Guidance excludes approximately \$7 million of indirect overhead costs expected to be incurred in 2016 during the Transition Services Agreement (TSA) period
- Amounts exclude approximately \$15 million in one-time integration related expenses for PAY.ON, the CFS divestiture, data center and facilities consolidation and bill payment platform rationalization
- Net new bookings growth in 2016 expected to be in the high single digits
- Expect to generate \$240 million to \$250 million in revenue in Q3





## APPENDIX



# Monthly Recurring Revenue

Monthly Recurring Revenue (millions)	Quarter Ended	
	June 30,	
	2016	2015
Monthly software license fees	\$ 18.3	\$ 18.6
Maintenance fees	60.3	60.1
Processing services	102.3	115.4
<b>Monthly Recurring Revenue</b>	<b>180.9</b>	<b>194.1</b>
CFS contribution	-	22.3
<b>Monthly Recurring Revenue</b>	<b>\$ 180.9</b>	<b>\$ 171.8</b>



# Historic Bookings By Quarter

Quarter-End	Total Bookings	Bookings Mix by Category		
		New Accounts / New Applications	Add-on Business inc. Capacity Upgrades & Services	Term Extension
3/31/2014	\$170,212	12% \$36,928	52% \$84,974	36% \$48,311
6/30/2014	\$234,346	22% \$44,321	50% \$106,056	28% \$83,969
9/30/2014	\$250,802	19% \$63,396	45% \$94,071	36% \$93,336
12/31/2014	\$391,120	25% \$99,972	38% \$172,387	37% \$118,761
3/31/2015	\$210,200	26% \$38,555	44% \$72,977	30% \$98,668
6/30/2015	\$291,657	18% \$32,919	35% \$144,054	47% \$114,683
9/30/2015	\$294,270	11% \$22,916	49% \$143,933	39% \$127,420
12/31/2015	\$443,547	8% \$173,206	49% \$124,224	43% \$146,118
3/31/2016	\$230,178	39% \$67,680	28% \$85,501	33% \$76,997
6/30/2016	\$198,174	29% \$26,050	37% \$99,306	33% \$72,818
		13%	50%	37%
	Total Bookings	New Accounts / New Applications	Add-on Business inc. Capacity Upgrades & Services	Term Extension
<b>JUN YTD 16</b>	\$428,352	\$93,730	\$184,807	\$149,815
<b>JUN YTD 15</b>	\$501,856	\$71,474	\$217,031	\$213,351
<b>Variance</b>	(\$73,504)	\$22,256	(\$32,224)	(\$63,537)



# Net New Bookings (SNET)

New Bookings Net of Term Extensions (SNET)			
Channel	Qtr Ended Jun 16	Qtr Ended Jun 15	% Growth or Decline
Americas	\$67,212	\$95,134	-29%
EMEA	38,287	59,244	-35%
Asia-Pacific	19,858	22,595	-12%
<b>Total SNET</b>	<b>\$125,356</b>	<b>\$176,973</b>	<b>-29%</b>
CFS contribution	\$0	\$5,585	
<b>Total SNET (excluding CFS)</b>	<b>\$125,356</b>	<b>\$171,388</b>	<b>-27%</b>



# Non-GAAP Operating Income (Loss)

Non-GAAP Operating Income (loss) (millions)	Quarter Ended June 30,	
	2016	2015
<b>Operating income (loss)</b>	<b>(\$26.3)</b>	<b>\$23.7</b>
Plus:		
Deferred revenue fair value adjustment	-	0.2
Employee related actions	2.1	1.4
Facilities related actions	2.2	-
Significant transaction related expenses	3.9	3.4
<b>Non-GAAP Operating income (loss)</b>	<b>\$ (18.1)</b>	<b>\$ 28.7</b>



# Adjusted EBITDA

Adjusted EBITDA (millions)	Quarter Ended June 30,	
	2016	2015
<b>Net income (loss)</b>	<b>(\$16.9)</b>	<b>\$27.1</b>
Plus:		
Income tax expense (benefit)	(17.1)	5.8
Net interest expense	9.6	10.4
Net other expense (income)	(2.0)	(19.7)
Depreciation expense	5.1	5.3
Amortization expense	19.3	18.3
Non-cash compensation expense	13.1	5.4
<b>Adjusted EBITDA</b>	<b>\$11.1</b>	<b>\$52.6</b>
Deferred revenue fair value adjustment	-	0.2
Employee related actions	2.1	1.4
Facilities related actions	2.2	-
Significant transaction related expenses	3.9	3.4
<b>Adjusted EBITDA excluding significant transaction related expenses</b>	<b>\$ 19.3</b>	<b>\$ 57.6</b>

Adjusted EBITDA excluding CFS impact (millions)	Quarter Ended June 30,	
	2016	2015
<b>Total Adjusted EBITDA</b>	<b>\$19.3</b>	<b>\$57.6</b>
CFS Adjusted EBITDA	-	(2.2)
Retained indirect costs during TSA period	2.1	-
<b>Total Adjusted EBITDA excluding CFS impact</b>	<b>\$ 21.4</b>	<b>\$ 55.4</b>



# Operating Free Cash Flow

Reconciliation of Operating Free Cash Flow (millions)	Quarter Ended June 30,	
	2016	2015
Net cash provided by operating activities	\$18.4	\$0.8
Net after-tax payments associated with employee-related actions	2.0	0.4
Net after-tax payments associated with facility closures	-	0.2
Net after-tax payments associated with significant transaction related expenses	3.1	1.0
Less capital expenditures	(17.2)	(9.4)
Plus capital expenditures for European datacenter and cyber security	6.8	-
<b>Operating Free Cash Flow</b>	<b>\$13.1</b>	<b>(\$7.0)</b>

\* Tax effected at 35%



# 60-Month Backlog

Backlog 60-Month (millions)	Quarter Ended	
	June 30, 2016	June 30, 2015
Americas	\$2,794	\$3,013
EMEA	924	840
Asia/Pacific	329	295
<b>Backlog 60-Month</b>	<b>\$4,047</b>	<b>\$4,148</b>
Deferred Revenue	\$164	\$182
Other	3,883	3,966
<b>Backlog 60-Month</b>	<b>\$4,047</b>	<b>\$4,148</b>



# Backlog as a Contributor of Quarterly Revenue

Backlog as Contributor of Revenue (thousands)	Quarter Ended June 30,		% Growth
	2016	2015	
Revenue from Backlog	\$ 214,852	\$ 248,815	-13.6%
Revenue from Bookings	5,078	17,007	-70.1%
<b>Total Revenue</b>	<b>\$ 219,930</b>	<b>\$ 265,822</b>	<b>-17.3%</b>
Revenue from Backlog	98%	94%	
Revenue from Bookings	2%	6%	

- Backlog from monthly recurring revenues and project go-lives continues to drive current quarter GAAP revenue
- Revenue from current quarter sales consistent with prior quarters



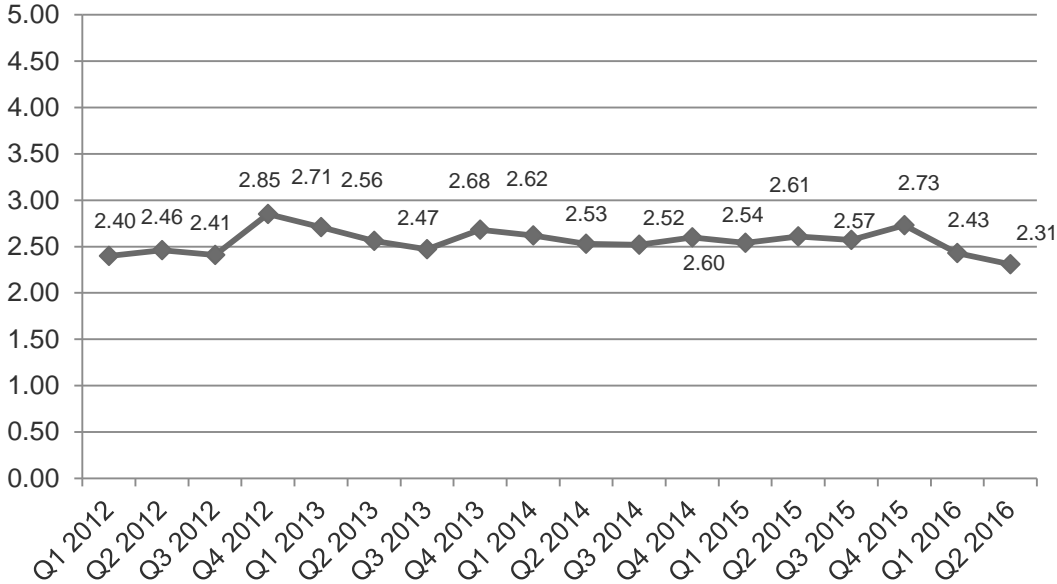
# EPS Impact of Non-Cash and Significant Transaction Related Items

EPS impact of non-cash and significant transaction related items (millions)	Quarter Ended			
	2016		2015	
	June 30,	June 30,	June 30,	June 30,
	EPS Impact	\$ in Millions (Net of Tax)	EPS Impact	\$ in Millions (Net of Tax)
GAAP net income (loss)	\$ (0.15)	\$ (16.9)	\$ 0.23	\$ 27.1
Plus:				
Gain on sale of Yodlee stock	-	-	(0.15)	(18.4)
Significant transaction related expenses	0.05	5.3	0.03	3.1
Deferred revenue fair value adjustment	-	-	-	0.1
Amortization of acquisition-related intangibles	0.03	3.5	0.03	3.7
Amortization of acquisition-related software	0.04	4.5	0.03	4.0
Non-cash equity-based compensation	0.07	8.5	0.03	3.5
<b>Total</b>	<b>\$ 0.19</b>	<b>\$ 21.8</b>	<b>\$ (0.03)</b>	<b>\$ (4.0)</b>
<b>Diluted EPS adjusted for non-cash and significant transaction related items</b>	<b>\$ 0.04</b>	<b>\$ 4.9</b>	<b>\$ 0.20</b>	<b>\$ 23.1</b>

\* Tax Effected at 35%



# Contract Duration Metric



- Represents dollar average remaining contract life (in years) for term license software contracts
- Excludes perpetual contracts (primarily heritage S1 licensed software contracts)
- Excludes all hosted contracts as both cash and revenue are ratable over the contract term



# Non-GAAP Financial Measures

To supplement our financial results presented on a GAAP basis, we use the non-GAAP measures indicated in the tables, which exclude certain business combination accounting entries related to the acquisition of Online Resources Corporation and significant transaction related expenses, as well as other significant non-cash expenses such as depreciation, amortization, and non-cash compensation, that we believe are helpful in understanding our past financial performance and our future results. The presentation of these non-GAAP financial measures should be considered in addition to our GAAP results and are not intended to be considered in isolation or as a substitute for the financial information prepared and presented in accordance with GAAP. Management generally compensates for limitations in the use of non-GAAP financial measures by relying on comparable GAAP financial measures and providing investors with a reconciliation of non-GAAP financial measures only in addition to and in conjunction with results presented in accordance with GAAP. We believe that these non-GAAP financial measures reflect an additional way to view aspects of our operations that, when viewed with our GAAP results, provide a more complete understanding of factors and trends affecting our business. Certain non-GAAP measures include:

- Non-GAAP revenue: revenue plus deferred revenue that would have been recognized in the normal course of business by Online Resources if not for GAAP purchase accounting requirements. Non-GAAP revenue should be considered in addition to, rather than as a substitute for, revenue.
- Non-GAAP operating income: operating income plus deferred revenue that would have been recognized in the normal course of business by Online Resources if not for GAAP purchase accounting requirements and significant transaction related expenses and less the pre-tax gain on the divestiture of CFS. Non-GAAP operating income should be considered in addition to, rather than as a substitute for, operating income.
- Adjusted EBITDA: net income plus income tax expense, net interest income (expense), net other income (expense), depreciation, amortization, and non-cash compensation, as well as deferred revenue that would have been recognized in the normal course of business by Online Resources if not for GAAP purchase accounting requirements and significant transaction related expenses. Adjusted EBITDA should be considered in addition to, rather than as a substitute for, operating income.



# Non-GAAP Financial Measures

ACI is also presenting operating free cash flow, which is defined as net cash provided by operating activities, plus payments associated with acquired opening balance sheet liabilities, net after-tax payments associated with employee-related actions and facility closures, net after-tax payments associated with significant transaction related expenses and less capital expenditures plus capital expenditures for European data center and cyber security. Operating free cash flow is considered a non-GAAP financial measure as defined by SEC Regulation G. We utilize this non-GAAP financial measure, and believe it is useful to investors, as an indicator of cash flow available for debt repayment and other investing activities, such as capital investments and acquisitions. We utilize operating free cash flow as a further indicator of operating performance and for planning investing activities. Operating free cash flow should be considered in addition to, rather than as a substitute for, net cash provided by operating activities. A limitation of operating free cash flow is that it does not represent the total increase or decrease in the cash balance for the period. This measure also does not exclude mandatory debt service obligations and, therefore, does not represent the residual cash flow available for discretionary expenditures. We believe that operating free cash flow is useful to investors to provide disclosures of our operating results on the same basis as that used by our management.

ACI also includes backlog estimates, which include all license, maintenance, services, and hosting specified in executed contracts, as well as revenues from assumed contract renewals to the extent that we believe recognition of the related revenue will occur within the corresponding backlog period. We have historically included assumed renewals in backlog estimates based upon automatic renewal provisions in the executed contract and our historic experience with customer renewal rates.

# Non-GAAP Financial Measures

Backlog is considered a non-GAAP financial measure as defined by SEC Regulation G. Our 60-month backlog estimate represents expected revenues from existing customers using the following key assumptions:

- Maintenance fees are assumed to exist for the duration of the license term for those contracts in which the committed maintenance term is less than the committed license term.
- License, facilities management, and software hosting arrangements are assumed to renew at the end of their committed term at a rate consistent with our historical experiences.
- Non-recurring license arrangements are assumed to renew as recurring revenue streams.
- Foreign currency exchange rates are assumed to remain constant over the 60-month backlog period for those contracts stated in currencies other than the U.S. dollar.
- Our pricing policies and practices are assumed to remain constant over the 60-month backlog period.

Estimates of future financial results are inherently unreliable. Our backlog estimates require substantial judgment and are based on a number of assumptions as described above. These assumptions may turn out to be inaccurate or wrong, including, but not limited to, reasons outside of management's control. For example, our customers may attempt to renegotiate or terminate their contracts for a number of reasons, including mergers, changes in their financial condition, or general changes in economic conditions in the customer's industry or geographic location, or we may experience delays in the development or delivery of products or services specified in customer contracts which may cause the actual renewal rates and amounts to differ from historical experiences. Changes in foreign currency exchange rates may also impact the amount of revenue actually recognized in future periods. Accordingly, there can be no assurance that contracts included in backlog estimates will actually generate the specified revenues or that the actual revenues will be generated within the corresponding 60-month period.

Backlog should be considered in addition to, rather than as a substitute for, reported revenue and deferred revenue.



# Forward-Looking Statements

This presentation contains forward-looking statements based on current expectations that involve a number of risks and uncertainties. Generally, forward-looking statements do not relate strictly to historical or current facts and may include words or phrases such as “believes,” “will,” “expects,” “anticipates,” “intends,” and words and phrases of similar impact. The forward-looking statements are made pursuant to safe harbor provisions of the Private Securities Litigation Reform Act of 1995.

Forward-looking statements in this presentation include, but are not limited to, statements regarding:

- Traction with Universal Payments
- Expectations regarding 2016 financial guidance related to revenue and adjusted EBITDA;
- Expectations regarding full year net new bookings growth; and
- Expectations regarding Q3 2016 revenue.



# Forward-Looking Statements

All of the foregoing forward-looking statements are expressly qualified by the risk factors discussed in our filings with the Securities and Exchange Commission. Such factors include, but are not limited to, increased competition, the success of our Universal Payments strategy, demand for our products, restrictions and other financial covenants in our credit facility, consolidations and failures in the financial services industry, customer reluctance to switch to a new vendor, the accuracy of management's backlog estimates, the maturity of certain products, our strategy to migrate customers to our next generation products, ratable or deferred recognition of certain revenue associated with customer migrations and the maturity of certain of our products, failure to obtain renewals of customer contracts or to obtain such renewals on favorable terms, delay or cancellation of customer projects or inaccurate project completion estimates, volatility and disruption of the capital and credit markets and adverse changes in the global economy, our existing levels of debt, impairment of our goodwill or intangible assets, litigation, future acquisitions, strategic partnerships and investments, risks related to the expected benefits to be achieved in the transaction with PAY.ON, the complexity of our products and services and the risk that they may contain hidden defects or be subjected to security breaches or viruses, compliance of our products with applicable legislation, governmental regulations and industry standards, our ability to protect customer information from security breaches or attacks, our compliance with privacy regulations, the protection of our intellectual property in intellectual property litigation, exposure to credit or operating risks arising from certain payment funding methods, the cyclical nature of our revenue and earnings and the accuracy of forecasts due to the concentration of revenue-generating activity during the final weeks of each quarter, business interruptions or failure of our information technology and communication systems, our offshore software development activities, risks from operating internationally, including fluctuations in currency exchange rates, exposure to unknown tax liabilities, volatility in our stock price, our pending appeal of the \$43 million judgement, plus \$2.7 million of attorney fees and costs awarded against us in the BHMI litigation, and potential claims associated with our sale and transition of our CFS assets and liabilities. For a detailed discussion of these risk factors, parties that are relying on the forward-looking statements should review our filings with the Securities and Exchange Commission, including our most recently filed Annual Report on Form 10-K and our Quarterly Reports on Form 10-Q.

